



audio

APEX
EVENTS

inventory



ALLEN & HEATH



DiGiCo
Quantum
338



SENNHEISER

SHURE



Soundcraft
by HARMAN

AUDIX
MICROPHONES

dB
TECHNOLOGIES



QSC



BOSCH



Audipack

AUDIX
MICROPHONES

dbx
PROFESSIONAL PRODUCTS

APEX
EVENTS

L-ACOUSTIC L2

16-channel PULS for medium and large size events

- Max SPL 155 dB
- Bandwidth 45 Hz- 20 KHz
- Transducers LC: 4 x 12"
LF: 8 x 10"
HF: 8 x 3"
- Weight 158 kg / 348 lb
- Directivity V: 10°
H: Four modules
Panflex: 70° / 90° / 110°
Integrated cardioid



L-ACOUSTIC L2D

- Max SPL 151 dB
- Bandwidth 45 Hz- 20 KHz
- Transducers LC: 4 x 12"
LF: 8 × 10"
HF: 8 × 3"
- Weight 149 kg / 328 lb
- Directivity V: 60°
H: Top two modules
Panflex: 70° / 90° / 110°
Bottom two modules progressive 110° to 140°
Integrated cardioid



L-ACOUSTIC LA-RAK III

16-channel PULS for medium and large size events

- Max SPL 155 dB
- Bandwidth 45 Hz- 20 KHz
- Transducers LC: 4 x 12"
LF: 8 x 10"
HF: 8 x 3"
- Weight 158 kg / 348 lb
- Directivity V: 10°
H: Four modules
Panflex: 70° / 90° / 110°
Integrated cardioid



L-ACOUSTIC L2-BUMP

Flying frame for L2 and L2D



L-ACOUSTIC K SERIES K2

Electroacoustic specs

3-way active full-range WST® enclosure
quad-amplified by LA4X / LA8 / LA12X



Usable bandwidth (-10 dB)

35 Hz – 20 kHz ([K2 70])

Maximum SPL¹

147 dB (preset [K2_70])

Nominal directivity (-6 dB)

Horizontal : 110° / 70° symmetric ;
90° asymmetric (35°/55° or 55°/33°)
Vertical : depends on the number
of elements and array curvature.

Transducers

LF: 2 × 12" cone drivers
MF: 4 × 6.5" cone drivers
HF: 2 × 3" diaphragm compression
drivers

Acoustical load

LF: bass-reflex, L-Vents
MF: bass-reflex
HF: DOISC waveguide, Panflex

Nominal impedance

LF : 2 × 8 Ω
MF : 8 Ω
HF : 16 Ω

L-ACOUSTIC K SERIES karall

Electroacoustic specs

2-way active WST® enclosure
amplified by LA4X / LA8 / LA12X



Usable bandwidth (-10 dB)	55 Hz – 20 kHz ([KARA II 70])
Maximum SPL¹	142 dB ([KARA II 70])
Nominal directivity (-6 dB)	Horizontal: 70° / 110° symmetric or 90° asymmetric □ vertical: dependent upon the number of elements and the line source curvature
Transducers	LF: 2 × 8" neodymium cone drivers HF: 1 × 3" neodymium diaphragm compression driver
Acoustical load	LF: bass-reflex HF: DOSC waveguide, Panflex
Nominal impedance	LF : 8 Ω HF : 8 Ω

Low frequency limit (-10 dB)	25 Hz ([KS28_100])
Maximum SPL¹	143 dB ([KS28_100])
Nominal directivity (-6 dB)	Standard or cardioid
Transducers	2 × 18" neodymium cone drivers
Acoustical load	Bass-reflex, L-Vents
Nominal impedance	4 Ω

L-ACOUSTIC

SUBWOOFERS – KS28

Electroacoustic specs

Flyable subwoofer 2 x 18"
amplified by LA12X



K1-SB

Flyable high power
subwoofer
Bass-reflex, dual 15



Max SPL	145 dB
Bandwidth	30 Hz
Transducers	LF : 2 x 15"
Weight	83 kg / 183 lb
Directivity	Standard



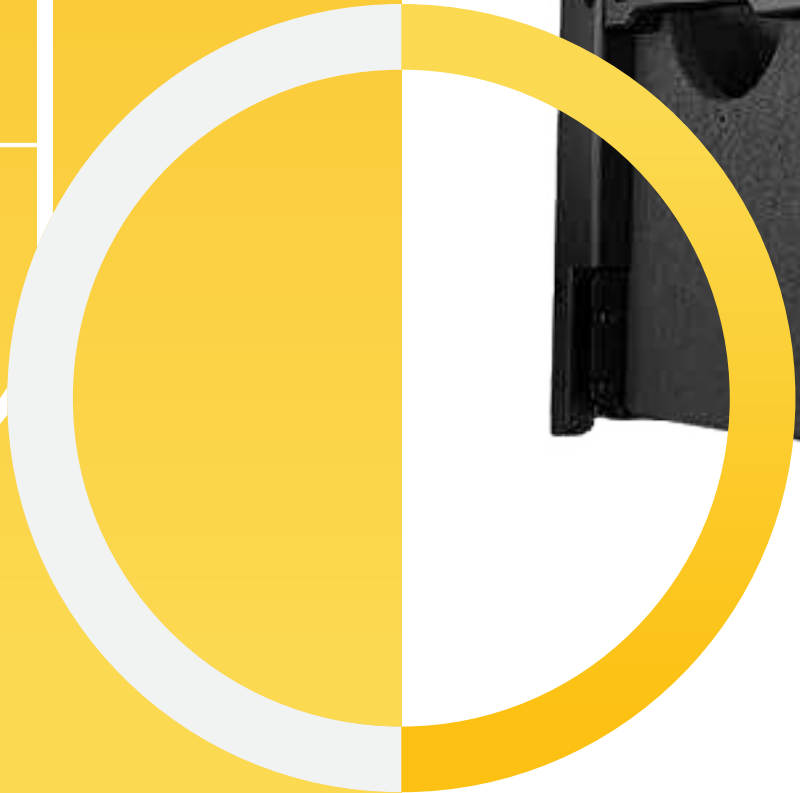
L-ACOUSTIC

SUBWOOFERS – SB18

Electroacoustic specs

High power compact subwoofer: 1 x 18"
amplified by LA4X / LA8 / LA12X

Low frequency limit (-10 dB)	32 Hz ([SB18_100])
Maximum SPL¹	138 dB ([SB18_100])
Nominal directivity (-6 dB)	Standard or cardioid
Transducers	1 × 18"
Acoustical load	Dual bass-reflex, L-Vents
Nominal impedance	8 Ω



LA-RAK II AVB Touring rack



Architecture

35 Hz – 20 12 channels of amplification kHz ([K2_70])

Output Power

147 dB (presUp to 40 000 W at 2,7 ohmset [K2_70])

Power supply

Three-phase 32 A IEC in/link
30 A NEMA for 110 V

Inputs

Milan-AVB, AES/EBU, Analog

Network

Milan-certified with seamless network redundancy



P1 AVB processor and measurement platform



Architecture	20 x 16 (+ headphones)
Busses	8 DSP busses + Cue Bus
I/O	8 Milan-AVB I/O, 4 Line I/O, 4 AES I/O 4 Mic/Line inputs (48V)
Processing (per bus)	Gain, mute, polarity, delay 16 EQ filters Clip protection
Height	1U
Network	Milan-certified with seamless network redundancy



L-ACOUSTIC K2-BUMP

Structure for flying K2 arrays
(incl. 1 extension sling + 1
laser adapter)

K2-BAR Extension bar for
K2-BUMP



L-ACOUSTIC KS28-BUMP

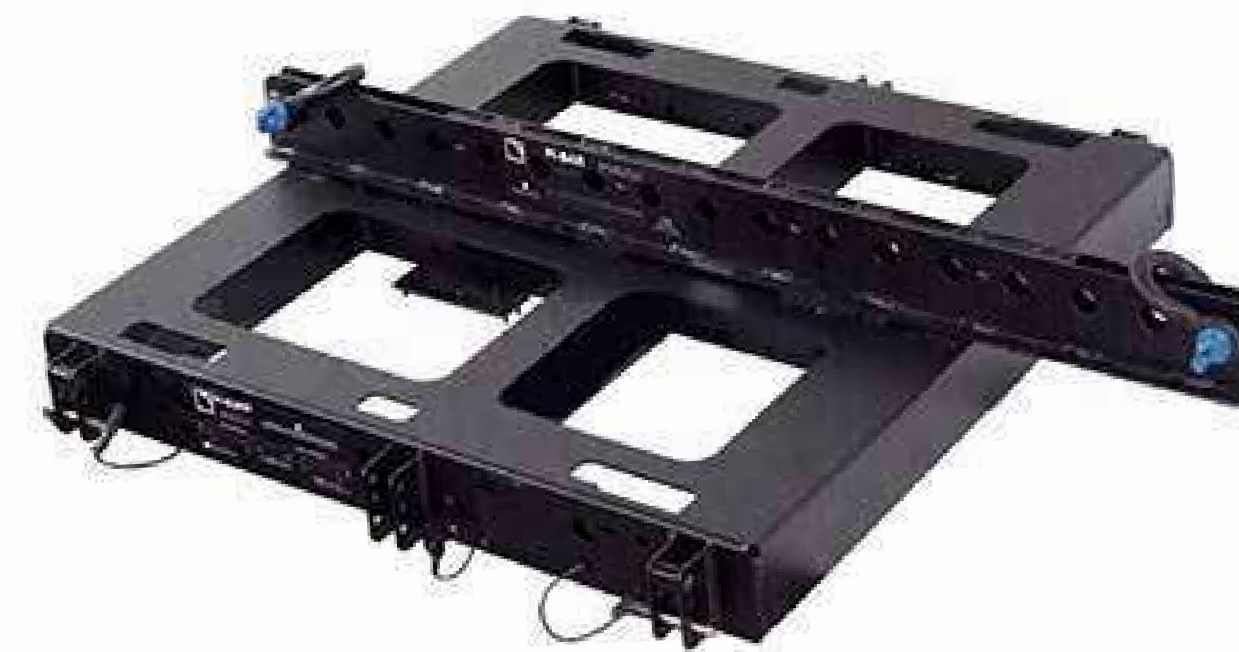
Lifting beam for flying up to 16 x KS28



L-ACOUSTIC M-BUMP

Bumper for flying or
stacking KARA (II)/SB18

M-BAR Extension bar for
rigging frame



L-ACOUSTIC MONITOR – X15 HiQ

Electroacoustic specs

2-way active coaxial enclosure
amplified by LA4X / LA8 / LA12X



Usable bandwidth (-10 dB)	55 Hz – 20 kHz ([X15])
Maximum SPL ¹	138 dB ([X15])
Nominal directivity (-6 dB)	Vertical: 60° symmetric horizontal: 40° symmetric
Monitor angle	Without risers: 35° with risers: 55
Transducers	LF: 1 × 15" cone driver HF: 1 × 3" diaphragm compression driver, neodymium
Acoustical load	Load bass-reflex, L-Vents, ellipsoidal waveguide
Nominal impedance	LF : 8 Ω MF : 8 Ω

L-ACOUSTIC TECH TOOLCASE II

System technician tool case to perform
room measurements and line source
array setup.



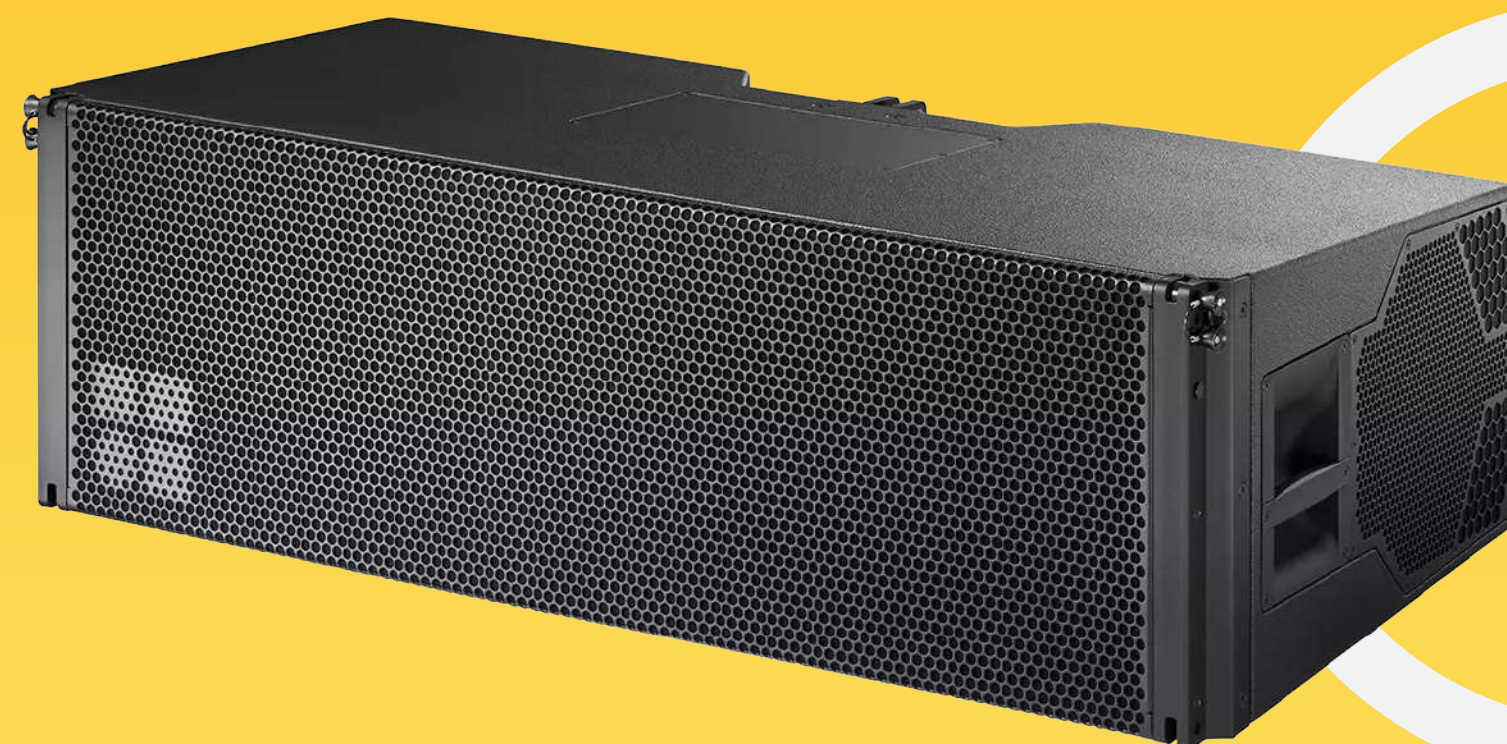
GSL8

Loudspeaker

Line arrays

Large format 3-way line array loudspeaker

- Components LF: 2 x 14" + 2 x 10"; MF: 1 x 10"; HF: 3 x 1.4" exit
- compression driver with 3.4" coil
- Dispersion 80°
- SPLmax 150 dB
- Weight 80 kg / 176 lb



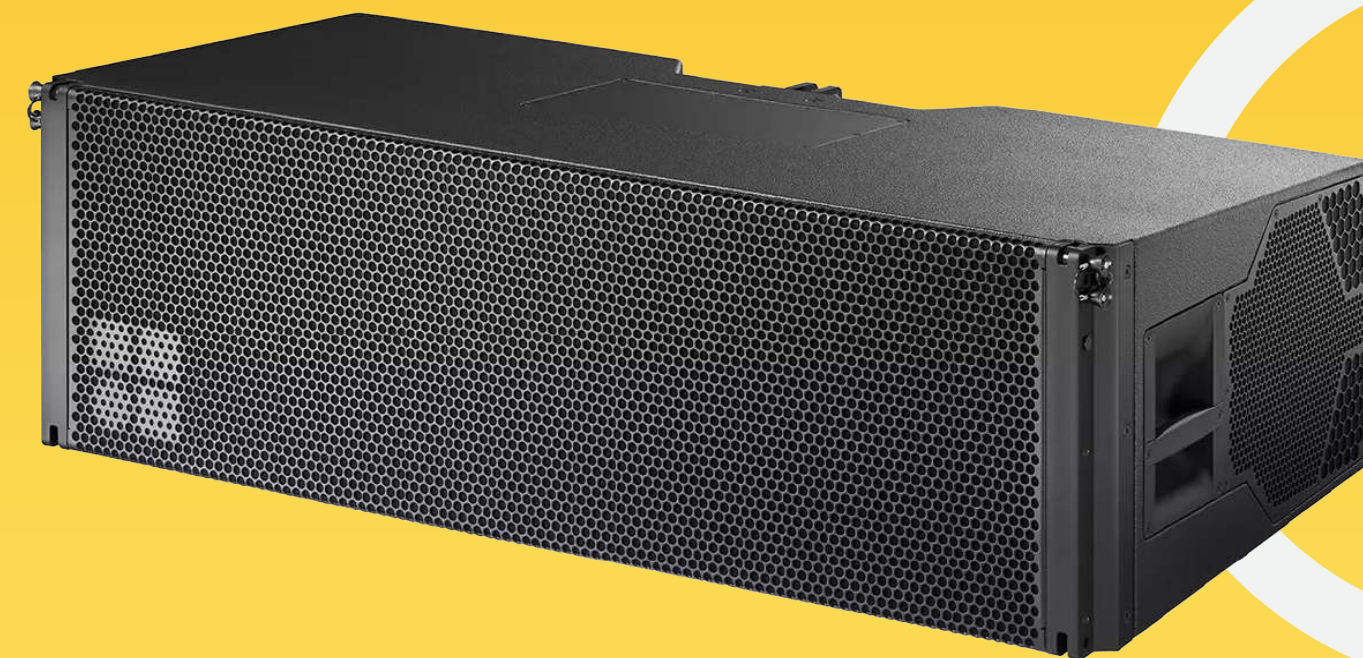
GSL12

Loudspeaker

Line arrays

Large format 3-way line array loudspeaker

- Components LF: 2 x 14" + 2 x 10"; MF: 1 x 10"; HF: 3 x 1.4" exit
- compression driver with 3.4" coil
- Dispersion 120°
- SPLmax 149 dB
- Weight 80 kg / 176 lb



SL subwoofer

Subwoofers

Medium format flyable cardioid subwoofer

- Components 18"/12"
- Dispersion Cardioid
- SPLmax 137 dB
- Weight 66 kg / 146 lb



SL-GSUB

subwoofer

Subwoofers
Large format cardioid subwoofer

- Components 3 x 21"
- Dispersion Cardioid
- SPLmax 144 dB
- Weight 132 kg / 291 lb



d&b audiotechnik

Z5603.552 6x D90

Touring Rack

NEMA Mains Panel / Amplifiers



GSL Flying frame set AS & SL Aiming plate



JBL VT 4888

Full-size 3-Way High Directivity Line Array Element

Composite Enclosure

The VT4888 Three-Way Line Array Element is designed to deliver high-quality reinforcement of music and speech in a variety of applications including concert audio and corporate A/V presentations of all types for both portable users and fixed venue installations.



JBL VT 4880 SUB

Full-size Arrayable 2-18" Subwoofer

The VT4880 Dual 18" Subwoofer Line Array Element is designed to deliver high quality sound reinforcement of sub-low frequencies for live music and a variety of applications.



RCF D-LINE HDL 20-AS Compact Line Array Module - 1200 watt Peak

FEATURES

- 1400 Watt Peak power - 700 Watt RMS
- 135 dB max SPL
- 55 Hz 20 kHz frequency response
- 2 x 10" Woofers
- 1 x 3" Compression Driver
- DSP controlled Input section with selectable presets
- Tour grade safe and solid variable mechanics
- Composite PP enclosure structurally wooden reinforced

The careful acoustic design, no compromise transducers and a unique, composite cabinet, design make the HDL 20-A the preferred tool of many professionals. Perfect in live sound reinforcement and reliable installed situations. The HDL 20-A is the ideal choice when line array performance is needed and a fast and easy set up is a must. The system is powered from a 1400 Watt Peak Power 2 way digital amplifier, sound is processed from a powerful DSP. The processing includes cluster and HF projection correction and special new presets for indoor and high curving situations. The system features state of the art RCF transducers, two powerful 10" for a solid bass reproduction and a large format 3" voice coil compression driver to deliver vocal clarity and high definition with an incredible dynamic. The HDL 18-AS is the ideal flyable bass complement for the HDL 20-A array system.



RCF 8006-AS Active High Power Subwoofer

FEATURES

5000 Watt Peak power - 2500 Watt RMS

137 dB max SPL

30 Hz - 120 Hz frequency response

2 x 18" Woofer

DSP controlled Input section with selectable presets

Delay control

Integrated mechanics for multiple configuration with HDL 20-A

Baltic birch tour grade cabinet

The SUB 8006-AS is the largest and most powerful active sub woofer in the professional series. Featuring two 18" transducers, with 4" inside/outside voice coils, this cabinet is designed to delivery a serious amount of low frequency. Powered by a 2500W digital amplifier module, the SUB 8006-AS can perform in the most demanding situations.



RCF Pro Sound Sub 8004-AS Active Subwoofer - 2500 watt Peak

FEATURES

- 2500 Watt Peak, 1250 Watt RMS
- 136 dB max SPL
- 30 Hz - 120 Hz frequency response
- 18" Woofer, 4.0" voice coil vented woofer
- DSP controlled Input section with selectable presets
- Delay control
- Baltic birch tour grade cabinet
- Compatible with NXL23-A (stacking)
- Compatible with NXL24-A (stacking)
- Multiple configurations with HDL 10-A and HDL 20-A

The SUB 8004-AS is one of the most powerful 18" subwoofers in pro-sound category. Featuring a high power, hypervented 18" woofer, with 4" inside/outside voice coils, this cabinet is designed to deliver a serious amount of low frequency. Powered by a 1250W digital amplifier module, the SUB 8004-AS can perform in the most demanding situations. The input board includes volume control, deep/punch switch, high pass switch, phase switch, cardioid, time delay.



1 Peak level measured at 1 m under free field conditions using pink noise with crest factor 4 (preset specified in brackets).

RCF Pro Sound Monitor – NX15 SMA

FEATURES

1400 Watt Peak, 700 Watt RMS digital bi-amplification

130 dB max spl

60° x 60° constant directivity horn

15" High power neodymium woofer, 2.5" voice coil

1.7" kapton dome, 1" exit, neodymium high frequency driver

DSP processing, floor - free field equalization, soft limiter and protection

Combo xlr/jack input, xlr signal output

The NX 15-SMA is equipped with new high power 700 W digital amplifier and a newly designed 15" coaxial neodymium transducer that guarantees outstanding audio quality and definition as well as an extremely lightweight of the final system. The NX 15-SMA can be also used as a portable PA system, thanks to the rugged powder coated steel pole mount installed on the side. In order to control the response of the speaker in such different applications, RCF has incorporated two special Equalization Modes:- Floor, for stage monitoring; Free Field, for the use of the speakers as a stand-alone PA system. Cabinet is made in Baltic Birch plywood, finished with an extremely resistant paint for an extensive use on the road. An ergonomic side handle, integrated with the input panel, is provided for an easier transport of the speaker.



JBL BRX300 Compact Line Array System

BRX308-LA

Dual 8-inch LF drivers and 3-inch titanium compression driver

Frequency range: 80 Hz–20 kHz (-10 dB)

110° horizontal x 12° (variable) vertical dispersion

136 dB maximum SPL

Variable interbox angles

I/O: two 4-pole NL4 connectors wired in parallel for IN/THRU use

Dimensions (W x H x D): 662 x 299 x 376 mm (26 x 11.8 x 14.8 inches)

Weight: 20.5 kg (45.2 pounds)

BRX325-SP

Dual 15-inch woofers

Frequency range: 32 Hz–250 Hz (-10 dB)

136 dB maximum SPL

Built-in DSP includes crossover management, EQ, limiting, correction filters, phase-corrected processing and driver-protection circuitry

Integrated 1,000 watt-per-channel, 6-channel amplifier offers the most channels in its class

Powers up to four BRX308-LA Line Array Elements

Input: two balanced XLR-F wired in parallel to XLR-M for THRU outputs

Output: two 4-pole NL4 connectors for powering up to four tops

Power input: 20A powerCON/230 VAC only

Dual inputs with Input Y mode allow a single input for the subwoofer and tops or dedicated inputs for more advanced uses

Casters provide ease of transport

Dimensions: 680 x 890 x 693 mm (26.7 x 35 x 27.3 inches) without caster wheels

Weight: 86 kg (190 pounds)

Power cable options for China, India and APAC regions



JBL EON715 15" Active Speaker/Stage Monitor

FEATURES

Custom-designed 15-inch woofer

2414H compression driver

Re-designed high-frequency horn

Power: 1,300W peak / 650W RMS

Frequency response: 45 Hz–20 kHz (-10 dB); 55 Hz–20 kHz (-3 dB)

Max SPL: 128 dB

Dispersion: 90° H x 60° V

Audio I/Os: 2 XLR Combo, 1 XLR passthrough

Advanced dbx DSP: Automatic Feedback Suppression, ducking, 100ms speaker delay, parametric EQ.

Built-in 3-channel digital mixer

Backlit color LCD screen provides easy access to functions

Universal JBL Pro Connect app control

Bluetooth 5.0 streaming and control

Durable polypropylene cabinet and metal grille

Two ergonomic handles simplify transport

Built-in pole mount and optional EON700 Universal Yoke Mount expand system configuration options.

Stackable cabinets allow easy storage

Dimensions: 27.6 x 17.2 x 13.8 in (702 x 438 x 351 mm) (HxWxD)

Weight: 37.3 pounds (16.9 kg)

Shipping dimensions: 29.92 x 21.73 x 18.38 in (760 x 552 x 467 mm) (HxWxD)

Shipping weight: 49.6 pounds (22.5 kg)



QSC K12.2 1200 Watts Peak

FEATURES

- Best in class audio performance
- 2000 Watt Class-D amplifier module
- Intrinsic Correction™ tuning and loudspeaker management
- Directivity Matched Transition® (DMT) design provides excellent power response and consistent performance across the listening area.
- Refined, professional appearance looks great in any application
- Rugged ABS enclosure for long life and lasting durability
- Deployment in either main PA or floor monitor position
- Factory Presets and savable/recallable Scenes for commonly-used application
- Multi-function digital display for control and selection of loudspeaker functions including cross-over, EQ, delay and frequency contour.
- Dual pole cup mounts (standard and 7.5 degree down-tilt)
- M10 fittings for flown applications
- Optional security panel prevents unauthorized tampering of controls



QSC™

QSC K12 - 1200 Watts Peak



Tech Specs

LF Driver: 12" Cone, 4" Voice-coil

HF Driver: 1.75" Diaphragm Compression

Amplifier: Bi-amplified Class D

Output Power Peak: 2000W (1000W LF, 1000W HF)

Output Power Continuous: : 1000W (500W LF, 500W HF)

Frequency Response: 52Hz - 18kHz (-6dB) | 48Hz - 20kHz (-10dB)

Maximum Peak SPL: 131dB

Crossover Frequency: 2kHz

Enclosure: ABS Thermoplastic

Mounting: Pole, Floor Wedge, Fly

Inputs: 2 x XLR/TRS Combo, 2 x RCA

Outputs: 2 x XLR (Direct), 1 x XLR (Line)

Controls: LF Switch (Ext Sub, Norm, Deep), HF (Vocal Boost, Flat), Front LED (Power, Limit, Off), Mic/Line Switch, Gain A & B Knobs, Power Switch

Dimensions: 23.7" x 14" x 14"

Weight: 41 lbs.



QSC KW 122 - 2000 Watts Peak

Features

12-inch Woofer; 1.75-inch diaphragm compression driver

75° conical DMT™ coverage

Maximum SPL 131 dB peak

Also functions as monitor floor wedge

1000-watt Class D power modules in all models (2 × 500 W continuous)

Onboard mixer with two combo XLR and ¼^{inch} inputs, and stereo RCA inputs, (three audio input sources); two direct channel outputs and single summed balanced output.

Extensive DSP featuring DEEP™ and Intrinsic Correction™ enhances system performance.

Directivity Matched Transition® (DMT) ensures uniform coverage across the entire sound field.

Rugged, texture-painted birch enclosures

Four-position Mic/Line gain (full-range models)

Tour-grade 16 gauge steel grilles

Comfortable ergonomic handles

35 mm pole sockets with Tilt-Direct™

M10 rigging points for suspended installation



QSC™

QSC KS118 Active Subwoofer



Back Panel

Active 18" Subwoofer
3600 W Class D amplifier module
direct radiating 18" long excursion direct radiating driver
Frequency response: 35 - 111 Hz
Max. SPL (sound pressure level): 136 dB
Nominal coverage angle: Omnidirectional (360°) or cardioid - Cardioid setup requires at least 2x KS118 units
DEEP mode
Multi-functional display
Adjustable crossover and delay
Gain control
Signal LED
Limiter LED
Power LED
High-performance DSP
2 XLR/Jack combo line inputs for channels A and B
2 XLR/M outputs for channels A and B
Vertical and horizontal deployment possible
M20 threaded pole receiver
18 mm Birch plywood housing with impact-resistant lacquer finish
4 Heavy-duty casters
LOCK power cable (length: 3 m)
Dimensions including casters (H x W x D): 640 x 520 x 785 mm
Weight: 47 kg
Colour: Black



QSC Sub Woofers - K SUB

2000 Watts Peak

- Dual 12" LF drivers
- 1,000 watt, efficient and light-weight class-D power module
- Locking IEC power cable
- XLR and 1/4" connectors
- Mic/Line and Line inputs with Loop-thru connectors and independent level controls.
- Includes threaded speaker mounting pole
- Threaded pole socket for solid, secure pole mounting
- 3" Casters



STAGEPAS 1K Portable PA System

1000W, portable PA system with 5 channel digital mixer, 12" subwoofer, 1.5" x10 line array speaker, a Bluetooth input, SPX digital reverbs and 1-knob EQ and multi band comp for master output.

1000W (HF:190W+LF:810W) power output

Biggest in the class 12" subwoofer for low frequency

1.5" x10 slim line array speaker for high frequency

Digital mixer (3 mono mic/line + 1 stereo line)

Multi band comp "mode" for master output

1-knob EQ for per channel

High resolution SPX digital reverbs (4types, parameter control)

2x Hi-Z (high impedance) inputs

Link out and monitor out

Dedicated cover included

Optional reverb foot switch

Optional dolly for more portability



BOSE L1 PRO 32 WITH SUB 2

Portable Line Array System with Bluetooth

Straight articulated line array

Especially suitable for singer/songwriters, DJs and bands as well as for medium-sized venues such as wedding venues, clubs, banquet halls and festivals

Easy to transport and quick to set up and adjust

Line array with 32x 2" articulated neodymium drivers

Separate subwoofer with 10" x 18" high excursion RaceTrack driver
(connected with just one cable via SubMatch)

Inputs: 2x 6.35 mm XLR combo with phantom power, 1x 3.5 mm AUX and Bluetooth

Output: XLR Line Out

Mixer with backlit controls for system EQ presets, ToneMatch presets, volume, tone and reverb effect

ToneMatch connector for integrating a Bose T4S or T8S mixer

Wireless control using the L1 Mix app on your smartphone or tablet

SPL max: 122 dB (Cont.) / 128 dB (Peak)

Lowest frequency: 37 Hz

Dispersion angle: 180° H x 0° V

Class D amplifier

Power: Mids/Treble 480 W / Bass 1000 W

Dimensions of L1 Pro32 (H x W x D): 213.5 x 34.5 x 55 cm

Dimensions of SUB2 (H x W x D): 69 x 30.5 x 55 cm

Weight of L1 Pro32: 13 kg

Weight of SUB2: 23.4 kg



BOSE



BOSE L1 PRO 16

Portable Line Array System with Bluetooth

J-shaped articulated line array

Especially suitable for singer/songwriters and DJs and for small venues such as cafes

Easy to transport and quick to set up and adjust

Line array with 16x 2" articulated neodymium drivers

Integrated subwoofer with 10" x 18" high excursion RaceTrack driver

Inputs: 2x 6.35 mm XLR combo with phantom power, 1x 3.5 mm AUX and Bluetooth

Output: XLR Line Out

Mixer with backlit controls for system EQ presets, ToneMatch presets, volume, tone and reverb effect

ToneMatch connector for integrating a Bose T4S or T8S mixer

Wireless control using the L1 Mix app on your smartphone or tablet

SPL max: 118 dB (Cont.) / 124 dB (Peak)

Lowest frequency: 42 Hz

Dispersion angle: 180° H x 0/-30° V

Class D amplifier

Power: Mids/Treble 250 W / Bass 1000 W

Dimensions (H x W x D): 201.2 x 35.5 x 45.6 cm

Weight: 24.8 kg

Includes transport bag for amplifier heads

BOSE

**APEX
EVENTS**

BOSE S1 PRO

Features

Can be used as a stage monitor, practice amp, and as a primary music system

Equipped with 1x 6" woofer and 3x 2.25" drivers

Bose S1 Pro battery pack - Rechargeable lithium-ion battery with Quick Charge function and a runtime of up to 11 hours

3-Channel mixer with reverb

Bluetooth

ToneMatch

Suitable for audiences of up to 50 people

EQ control for 2 channels and an extra channel for wired (3.5 mm jack) and wireless music sources

Bluetooth streaming with one-touch pairing

Coverage pattern: 100° x 40°

Frequency response: 70 Hz - 16 kHz

Max. SPL (sound pressure level): 103 dB

2x XLR / 6.3mm Jack combo input

1x 3.5 mm Jack input

1x Line output

Suitable for stands with a 35 mm diameter

Dimensions (L x W x H): 330 x 241 x 286 mm

Weight: 6.8 kg

Colour: Black

Includes a battery pack and a power cable



BOSE

Bose T4S Tone Match Mixer

Technical Summary

- 4x Combo XLR-1/4" inputs
- 2x Aux inputs
- 2x Aux sends
- 2x ToneMatch ports
- 1/4" TRS stereo outputs
- Dedicated headphone output
- USB A and B for playback or PC
- Protective magnetic cover
- ToneMatch cable
- 214 x 184 x 83 mm (D x W x H)
- 8.4" x 7.25" x 3.25"
- 1 kg | 2.1 lbs



BOSE

Nexo PS10 -600 Watts



- > High-power system (132dB Peak SPL@1m) with 10in LF and 1in HF drivers.
 - > Rotatable asymmetrical horn and unique cabinet architecture ensure versatility.
 - > User-adaptable for both PA and stage monitoring applications.
 - > Two-way passive 8Ω design uses a single amplifier channel for simpler installation and lower cost.
- Sophisticated control electronics ensure reliable, linear operation.
- > Supported with a full range of mounting and flying accessories.

NEXO

**APEX
EVENTS**

Turbosound TFX 122 M-AN

1100-Watt 2 way 12"

Floor Monitors

Tech specs

2 way stage monitor for portable applications
1,100 Watt power featuring Klark Teknik Class-D technology
Klark Teknik Digital Signal Processing for total system control
ULTRANET digital audio networking connects to mixers and other sources
High excursion 12" low frequency driver with low mass voice coil for improved transient response
Titanium dome 1" compression driver with extended high frequency reproduction
Low profile design to maximise audience sight lines
Low distortion waveguide provides 60° H x 40° V dispersion
Fully featured user interface with LCD display for ease of navigation
PC remote control software downloadable at turbosound.com
15 mm (5/8") plywood enclosure with fibre glass reinforced composite end cheeks
Hard wearing semi matt black paint finish
Rugged powder coated perforated steel mesh grille
Durable handles for easy lifting and carrying



DB Technologies Flexsys series FM12 Floor Monitors - 1200 Watts Peak



Power: 240 + 60W/ RMS digipack
Equipped with: 1x 12" and 1x 1"
Frequency range: 62 Hz - 20 kHz
Max SPL: 126 dB
With FRFR - full range flat response
Dispersional pattern: 60° x 90° CD horn
Connections: line/ mic input/ XLR
High quality housing
Dimensions (W x D x H): 490 x 290 x 410 mm
Weight: 17 kg
Colour: Black

DIGICO Quantum 338T Digital Audio Console

DiGiCo Quantum 338 Digital Mixing Console Features:

128 input channels, 64 buses, an LR/LCR/LCRS/5.1 master bus, and a 24-in/24-out processing matrix
Mustard Processing channel strips with emulated tube preamplification, EQ, and dynamics processing
Spice Rack provides powerful FPGA-fueled insert effects
Local connections include 8 mic/line inputs, 8 analog outputs, and 4 channels of AES digital I/O
3 redundant MAD I in/out can be configured as 6 MAD I/O at 48kHz
Support for dual second-generation Optocore loops
UBMAD I gives you 48 channels of computer recording and playback via USB
2 dedicated DMI slots make expansion a piece of cake (DMI interface option cards sold separately)
3 x 17-inch multi-touch screens with a meter bridge and soft quick-select buttons
70 individual TFT LCDs for displaying channel information and metering, bank information, macros, and more
38 touch-sensitive, motorized 100mm faders yield comfortable tactile control



Titan-R Sound Grid Server

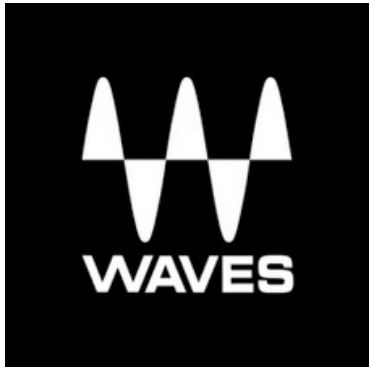
Titan DSP processing, with redundancy for maximum reliability &

Dell P2418HT 23.8" 1920X1080 LED IPS Touch Monitor

WAVES	Titan-R Server	Waves compatible SoundGrid Server 2 U Rack Mount, including Redundant PSU (Please checkserver performance online at www.waves.com/hardware/soundgrid-servers)
Waves	Axis Scope	Waves qualified Host (2U Half rack)
Waves	8-Port Network Switch, Netgear GS108 V4	8-Port network switch (Please consult with Waves before placing a order for this item)
Waves	Super Rack SoundGrid	SuperRack SoundGrid is a cutting-edge plugin rack,UtilizingSoundGrid Server(s) and Interface (s) to significantly increase plugin count,minimize latency to near -zero, run upto 128 audio channels through multipleinstances of Waves' plugins.
Waves	2U Rack Shelf for Half-Rack SoundGrid Devices (Gen X9 or Below)	Custom made to fit two half - rack 2U SoundGrid Servers side-by-side, for rack-mounting on to a standard 19inch rack frame

Axis Scope

Computer optimized to run Waves audio applications



Avid VENUE | S6L 32D

AVID VENUE | S6L-32D AUDIO CONSOLE

Mix and record any live production, tour, or event with ease. Avid VENUE | S6L delivers the unprecedented processing power, exceptional performance, and renowned sound quality artists and engineers rely on to put on the best show possible.

From direct AAX plug-in support, 128 tracks of Pro Tools recording, and intelligent touchscreen workflows, to its 300+ processing channels, S6L gives you the mixing efficiency, creativity, and flexibility you need to meet the demands of any gig.

Avid VENUE | S6L is the only live sound system that enables you to access and control Waves and AAX plug-ins directly from your mixing console. It's the only system that provides 128 tracks of built-in Pro Tools recording/playback and makes Virtual Soundcheck possible, opening up new revenue-making opportunities while saving hours of prep and pre-show time. Plus, you get three years of 'round-the-clock priority care and coverage to ensure the show always goes on.



FEATURES | SPECIFICATIONS | BENEFITS

- Touchscreens: (4) Daylight visible 12.1"
- Faders: 32 + 2
- Knob Modules: 3 x 32, each with high-resolution OLEDs and tri-color function indicator
- Master Live: Graphic TFTs with soft buttons; Touch and Turn assignable encoder; 2 assignable faders; monitoring, layout and snapshot controls; transport controls and function buttons
- Metering: 30-segment meters per channel, with pre- and post-fade metering options; Nominal indicator, Expander/Gate status and Compressor/Limiter gain reduction meters
- Analog in/outputs: 8 XLR mic/line
- Digital in/output: 4 pairs of XLR stereo AES/EBU (8 channels total)
- Headphone outputs: 2 independent 1/4" TRS stereo headphone jacks
- Dimensions: (H) 3.6 x 15.3 in x (W) 51.3 in x (D) 51 in
- Weight: 155 lbs

LMG



YAMAHA DM7

DiGiCo Quantum 338 Digital Mixing Console Features:

The DM7 is a Dante-equipped versatile digital mixing console with unparalleled sound quality, ease of operation, and high reliability that make it perfect for a wide range of applications. The DM7 is configured with 24 + 4 faders and a 2 x 12" + 1 x 7" multi-touch screen.

Input mixing channels: 120 mono

Buses: 48 Mix + 12 Matrix + 2 Stereo

Display: 12.1" multi-touch screen x 2, 7" multi-touch screen x 1

Faders: 28 (12 + 12 + 4)

Analog I/O: 32 inputs / 16 outputs

Dante: 144 in / 144 out

AES/EBU: 2 in / 2 out (with SRC)

Slot: PY Slot x 1

USB Audio Interface: 18 in / 18 out

Power supply: Redundant power supply built-in

Power consumption: 240 W

Dimensions (W x H x D): 793 mm x 324 mm x 564 mm (31.3" x 12.8" x 22.2")

Net Weight: 23.5 kg (51.8 lb)



Allen & Heath SQ7 Digital Mixer



48-Channel Digital Mixer

With 96 kHz FPGA processing

33 Faders / 6 layers

12 x Mono or Stereo mixes (perfect for in-ear monitoring setups) + LR

3 x Stereo matrix

8 x Internal stereo FX engines with stereo returns

DEEP Processing allows plugins to be directly embedded into all input and mix channels

7" Touch screen

SLink connector for remote audio / expansion

64ch I / O connector for audio networking

32 x 32 USB audio interface

SQ drive for direct dubbing to USB

AES output

Level indicator per channel

Integrated LED lighting per fader

16 Assignable soft keys

8 Assignable soft rotaries

Channel LCD displays

Integrated 48 channel automatic mixer

Compatible with ME-1 and ME-500, Audio Networking Card, Dante or Waves

Dimensions: 804 x 514.9 x 198 mm

Weight: 17.8 kg

ALLEN & HEATH

**APEX
EVENTS**

MIDAS M32 LIVE - Digital Mixer - 32 channel with DL32 Stage Box & DN32 Dante Card

- Live performance and studio recording digital console with up to 40 simultaneous input channels
- 32 award-winning Midas microphone preamplifiers
- 25 time-aligned and phase-coherent mix buses
- AES50 networking allows up to 96 inputs and 96 outputs
- 192 kHz ADC and DAC converters for outstanding audio performance
- Industry-leading design by Bentley* Motors Designer
- High-performance carbon fibre, aluminium and high-impact steel structure
- 40 bit floating point digital signal processing
- 8 DCA and 6 mute groups
- 8 stereo signal processing effects engines
- 25 Midas PRO motorised 100 mm faders
- Daylight viewable 7" full colour TFT display screen
- 32 x 32 channel USB 2.0 audio interface
- DAW remote control emulations of Mackie Control* and HUI* protocols
- Optional wireless remote control with Midas Apps for iPhone* and iPad*
- Auto-ranging universal switch-mode power supply



Soundcraft Si Expression 1 – 16 Channel Digital Mixer



- 16 (24-Si Expression 2, 32-Si Expression 3) mono mic inputs
- 4 line inputs
- 66 inputs to mix
- 1 Visi Connect™ option card slot for 64 x 64 input/output expansion
- Freely assignable faders and patching
- Pre/Post selection per input per bus
- AES in and out
- Global mode encoders
- Soundcraft FaderGlow™
- GEQ on every bus
- 20 sub-group/aux busses
- 4 FX busses
- 8 Matrix busses
- LR and C Mix busses
- 4 Stereo Lexicon Effects engines
- Delay on inputs and outputs
- 4 Mute Groups
- Freely assignable insert loops
- Harman HiQnet integration
- Colour touch screen interface

ZOOM LIVE TRACK L-12



FEATURES

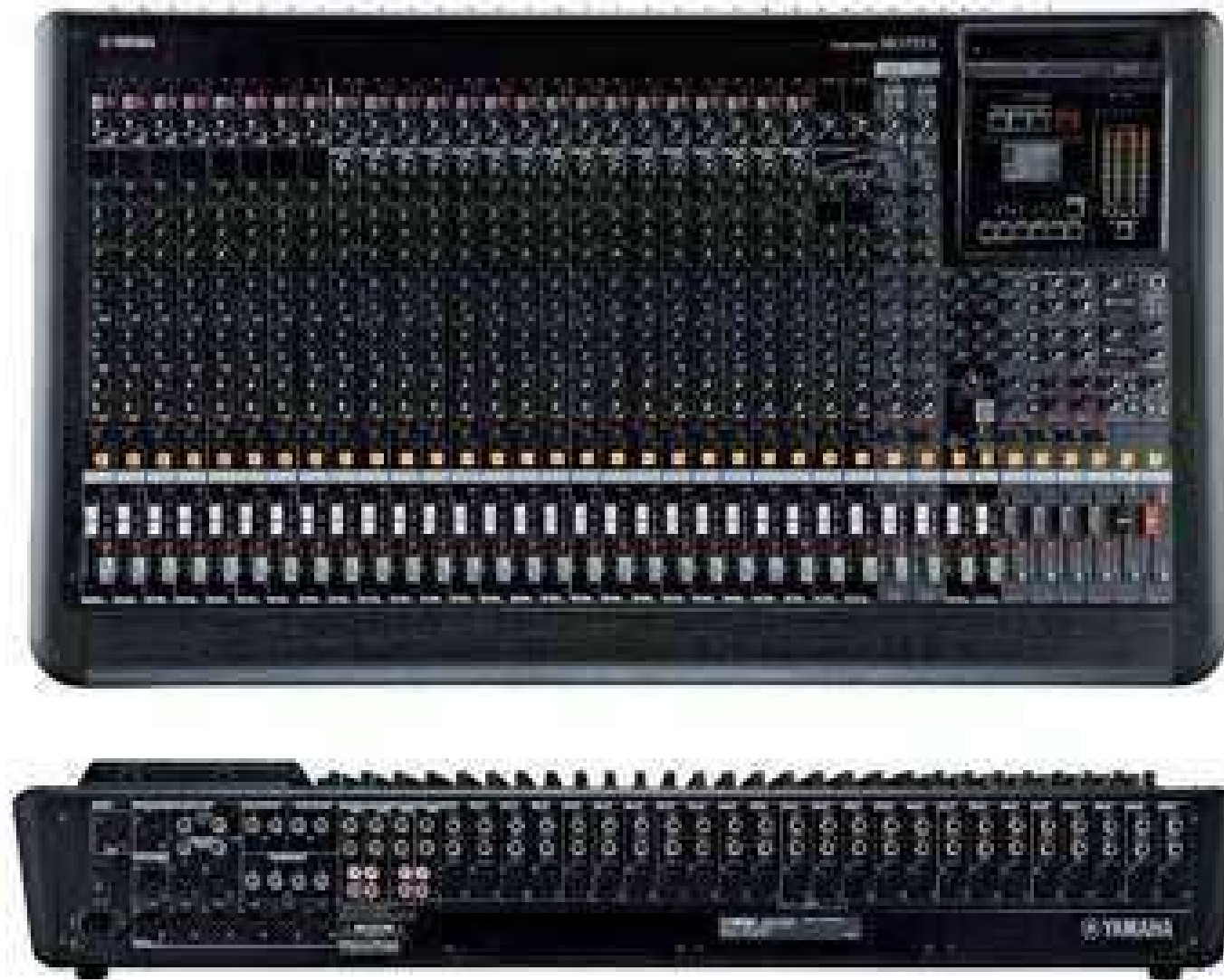
- 12 discrete channels (8 mono plus 2 stereo) with XLR or 1/4-inch connectivity
- 14-track simultaneous recording, 12-track playback
- 14-in/4-out USB audio interface connectivity
- 5 powered headphone outputs, each with a customizable and saveable mix
- Add backing/click tracks from your computer to your live mix and recording
- RCA and TRS line inputs
- 48V phantom power (channels 1-4 and 5-8)
- Hi-Z connectivity (channels 1 and 2)
- 26 dB pad (channels 3-8)
- Built-in compression control (Channels 1-8)
- Digital level meters -48 dB to 0 dB
- Master mute button
- Low-cut control
- Stereo panning
- Master and Monitor Outputs A-E
- Scene saving function, up to 9 scenes saved at a time
- 16 built-in delay and reverb effects with adjustable parameters
- Built-in slate mic
- Class-compliant mode (for iOS compatibility)
- SD card input
- Built-in metronome
- Automatic recording starting/stopping capability
- Project protection

MIDAS MR18 - Digital mixer - 18 channel with controller

- iPad*/Android* tablet controlled 18-input digital mixer for studio and live application
- 16 award-winning Midas PRO microphone preamplifiers
- Built-In Tri-Mode Wifi router for direct operation-no need for external routers
- 18 x 18 channel, bidirectional USB2.0 interface
- Dugan*-style Auto-Mixing automatically manages microphone gain sharing
- 4 digital signal processing effects engines
- ULTRANET connectivity for P-16 Personal Monitoring System*
- Rack ears and protection bumpers included for flexible rack and onstage applications
- 6 aux and main LR buses with inserts, full dynamics processing and 6-band parametric or 31-band graphic EQ
- 6 XLR aux outputs and 2 XLR main outputs plus phones connector
- 40 bit floating point digital signal processing
- Free iOS, Android and PC/Mac*/Linux* apps available for remote operation via Ethernet, LAN or WiFi
- MIDI In/Out allows controlling the mixer via MIDI equipment or for use as a USB MIDI interface
- Future firmware updates, incl. new FX "Plug Ins", downloadable from midasconsoles.com free of charge
- Auto-ranging universal switch-mode power supply



Yamaha MGP Analog Mixer 32 Channels



D-PRE discrete Class A microphone preamps with inverted Darlington circuit design
X-pressive EQ gives you the warmth and musicality of classic vintage EQs
Intelligent 1-knob compressors add optimally set compression to a wide variety of input sources
Simple, analog-style control of sophisticated DSP functions
Traditional analog feel with the functionality that only digital technology can offer
Stereo Hybrid channel is a new way of approaching sound reinforcement in the digital age
Priority Ducker lets a microphone to take priority over another sound source automatically
Leveler "auto levels" tracks from a sound source that varies in volume
Stereo Image seamlessly narrows the spectrum, so widespread audiences hear an accurate mix
REV-X reverb gives you 3 incredible-sounding, high-resolution reverbs
Yamaha's acclaimed SPX digital multi-effects processor with 16 advanced digital effects
New 31-band graphic equalizer processing on the stereo bus
USB port to connect your iPod or iPhone for easy playback with a single connection
Metal chassis for rugged professional durability
Internal universal power supply lets you plug in with confidence in any region with 100V to 240V



Yamaha MG 166 CX - Analog Mixer - 16 Channel

- 16 input channels
- High-quality mic preamp
- 10 Mic inputs, four stereo line inputs
- HPF
- 8 insert I/O
- 6 Compressors
- Phantom power switch (+ 48V)
- Illuminated CH ON switches
- 3-band Mid-sweep EQ (Ch 1-8)
- 60mm super-smooth fader
- 2-band EQ (Ch 9/10-15/16)
- SPX digital multi-effect
- 6 busses (Stereo + 4 groups)
- Monitor mix
- 2 Aux sends + 1 Effect send
- Lightweight (12 lbs)
- 1 Stereo Aux return
- 12-seg LED level meter
- Neutrik XLR Connectors
- Rackmountable
- Input gain trim



Allen and Heath ZED FX 16 - Analog Mixer



- 10 mono mic/line inputs
- 3 stereo channels with 2-band EQ
- 16 internal time-delay effects
- Neutrik mic XLRs
- Neutrik 1/4 inch jacks
- Channel insert
- Super wide gain DuoPre™ mic line input
- 3 band EQ with MusiQ
- 2 pre-fade Aux sends
- 1 post-fade Aux send
- 1 internal FX send
- Illuminated mute
- Sound image pan
- Illuminated PFL & peak warning indicator
- Stereo returns & playback
- All inputs with level control
- 12 bar meters
- Mono/stereo function on auxes 1&2
- Monitor output section
- Alt stereo output source
- Configurable USB stereo audio in/out

ALLEN&HEATH

**APEX
EVENTS**

Yamaha MG12XUK - Analog Mixer - 12 Channel

12-Channel Mixing Console
Max. 6 Mic / 12 Line Inputs (6 mono + 3 stereo)
1 Stereo Bus
1 AUX (incl. FX)
“D-PRE” mic preamps with an inverted Darlington circuit
1-Knob compressors
High-grade effects: SPX with 24 programs
24-bit / 192kHz 2in / 2out USB Audio functions
Works with the iPad (2 or later) through the Apple iPad Camera Connection Kit /
Lightning to USB Camera Adapter
Includes Cubase AI DAW software download version
Cubasis LE for iPad available at App Store
PAD switch on mono inputs
+48V phantom power
XLR balanced outputs
Metal chassis
Dimensions(W×H×D): 315 mm x 91 mm x 297 mm (12.4" x3.6" x11.7")
Net Weight: 3.0 kg (6.62 lbs.)



Yamaha MG10XU - Analog Mixer - 10 Channel

10-Channel Mixing Console

Max. 4 Mic / 10 Line Inputs (4 mono + 3 stereo)

1 Stereo Bus

1 AUX (incl. FX)

"D-PRE" mic preamps with an inverted Darlington circuit

1-Knob compressors

High-grade effects: SPX with 24 programs

24-bit / 192kHz 2in / 2out USB Audio functions

Works with the iPad (2 or later) through the Apple iPad Camera Connection

Kit / Lightning to USB Camera Adapter

Includes Cubase AI DAW software download version

PAD switch on mono inputs

+48V phantom power

XLR balanced outputs

Metal chassis

Dimensions(W×H×D): 244 mm x 71 mm x 294 mm (9.6"x 2.8"x 11.6")

Net Weight: 2.1 kg (4.63 lbs.)



DBX Equalizer 2300



- 1/3-octave Constant Q frequency bands
- Switchable boost/cut ranges of +/-6 or +/-12dB
- 12dB/octave 50Hz low-cut filter
- Front panel bypass switch
- +/-12dB input gain range
- 4-segment LED ladders for monitoring output level
- XLR and TRS inputs and outputs
- Frequency response of <10Hz to >50kHz
- Dynamic range of greater than 108dB
- Weight: 6.2 lbs.
- Dimensions: 3.5" x 6" x 19"

Pioneer DJM-V10

Creative style 6-channel professional DJ mixer

- MIDI Control
 - Full assignable MIDI controls
- DVS Control
 - rekordbox
 - Serato DJ Pro
 - TRAKTOR PRO 3
- Accessories
 - DJM-V10
 - Power Cord
 - Warranty (for some regions)
 - Quick Start Guide
 - Precautions for Use



Pioneer

DJM 900 NX 2 Mixer

MIDI Control Full assignable MIDI controls

ProDJ Link Yes

P-LOCK Fader Caps Yes

Auto Standby Yes

Compatible DJ Software (not included) rekordbox dj

DVS Control rekordbox dvs ready (not included) Paid upgrade to Serato DJ Essentials

---Channels---

EQ/ISO 3 band

EQ/ISO Range Built-in, switchable 3-band equaliser: -26 dB ~ +6 dB /

3-band isolator: $-\infty$ ~ +6 Db

Specifications

Width 333 mm

Height 107.9 mm

Depth 414.2 mm

Weight 8 kg

Frequency Range 20 - 40000 Hz

Sampling Rate 96 kHz

A/D Converter 24 bit

D/A Converter 32 bit

S/N Ratio Line, Phono & Mic 105 dB, 88 dB & 79 dB

Distortion < 0.005 % (LINE)



Pioneer

CDJ-3000 Media Player



Powerful DJ media player with comprehensive controls and format support
Cutting-edge microprocessor unit for top-notch sound quality and system stability
9" multicolor touchscreen simplifies browsing and performing
Display can be up to 150% brighter than previous CDJ models for better visibility
Ultra-low touch latency for a seamless hands-on experience
Great-feeling vinyl jog wheel includes response controls and 3-way direction control
8 hot cue buttons provide an extended range of performance options
Hardware buttons for Beat Jump and Key Sync functions for even more creative performance potential
Load ALAC, AAC, AIFF, FLAC, MP3, and WAV files from hard disks or SD cards
Set up tracks and entire playlists in the rekordbox application
Supports iOS rekordbox app for music playback
Connect to other Pioneer DJ gear via ProDJ Link networking
High-quality analog and digital S/PDIF audio output onboard

Pioneer

**APEX
EVENTS**

DJM 750 mixer

DiGiCo Quantum 338 Digital Mixing Console Features:

A powerful 4-channel DJ mixer with many top features from the DJM-900NXS
Selectable fader curves and easy cue assignments streamline your flow
Signature switchable 3-band Isolator EQs on each channel deliver serious tone shaping
Enhance your sound with 4 Sound Color FX and 13 Beat FX options
Combine Sound Color FX and Beat FX with the Boost FX function
32-bit DSP suppresses and balanced op-amps/output circuits prevent noise
4-in/4-out 24-bit/96kHz USB audio interface lets you connect to your DJ software
Assignable MIDI functions let you control your DJ software from your mixer
Full support for rekordbox dj's rekordbox dvs Plus Pack timecode vinyl integration



Pioneer

CDJ 900 NEXUS Media Player



A value-packed, high-performance DJ deck and DJ CD player that lets you perform from virtually any storage medium

Included rekordbox software and free rekordbox app supports Wi-Fi playback from Mac and PC computers as well as iPhones, iPod touches, iPads, and Android-based mobile devices

Also plays back from USB storage devices such as flash memory and hard disks, SD memory cards, and audio CDs

Supports MP3, AAC, WAV, and AIFF file formats

Pro DJ Link function lets you interconnect up to 4 units via LAN cables, allowing you to create advanced DJ setups

Full-color LCD display makes song selection, cueing, looping, and beat matching easy
Slip Mode keeps music moving in the background during Loop, Reverse, Scratch, and Hot Cue Pause playback modes making it possible to produce bold musical arrangements without changing the progress of the original music

Quantize mode automatically and accurately quantizes when using Loop, Reverse, And Hot Cue, even if the dynamic of the beat has gone out of sync

Beat Divide lets you trigger 3/4, 1/3, 1/2, 1/4, 1/8 increments and played for a specified number of beats without breaking the rhythm of the music

Wolfson DAC processor ensures excellent sound quality with increased headroom and exceptionally low noise

Pioneer

**APEX
EVENTS**

XDJ-RX3

2-channel performance all-in-one DJ system

Main Features

FAT16
FAT32
HFS+
rekordbox Serato DJ Pro
Width 728.1 mm
Height 118.4 mm
Depth 469.5 mm
Weight 9.3 kg
Frequency Range 20 - 20000 Hz
Sampling Rate 44.1 kHz
A/D, D/A Converter 24 bit
Signal-to-Noise Ratio 110 dB USB
Distortion < 0.003 % (USB)
Power Supply AC 100-240 V



Pioneer

Sennheiser EM 6000 Dante Two-Channel Digital Wireless Receiver



 **SENNHEISER**



MM 445



MMK 965-1 BK

EM 6000

Overview Digital 2-channel receiver for live productions and transmissions, even in the toughest environments.

Huge spectral efficiency with equidistant frequency grid and true bit diversity.

Analog and digital outputs (XLR, jack, AES-3, redundant Dante™), high-contrast OLED display with LQI indicator

**APEX
EVENTS**

Axient Digital Wireless Systems

AD4Q

AD4Q Four-Channel Digital Wireless Receiver



SHURE



SHURE

Wireless Microphones – Shure

ULX-D Series

Extended 20 Hz – 20 KHz frequency range with totally flat response

24 bit / 48 kHz digital audio

Over 120 dB dynamic range, 130 dB (typical) using Dante™ digital networked audio

Shure Gain Ranging optimizes dynamic range for any level of input source

Built-in limiter circuitry prevents digital audio clipping

Compatible with Wireless Workbench® 6 software, for advanced frequency coordination, monitoring, and control

Wireless channel efficiency – 22 active transmitters per 8 MHz TV channel. In High Density mode, up to 63 active transmitters per 8 MHz TV channel, with no audio quality degradation

Optimised scanning automatically finds, prioritises, and selects the cleanest available frequencies

Interference detection provides instant alerts

AES-256 bit encryption offers unbreachable privacy, and eliminates stray RF interference by only allowing the encrypted signal through to the receiver

Advanced lithium ion battery technology provides up to 9 hours of continuous use, with detailed tracking of battery health status, and no memory effect

Transmitters and receivers display remaining battery life accurate to within 15 minutes

Ethernet networking for streamlined setup across multiple receivers

Removable half wave antennas

Up to 72 MHz overall tuning range (region dependent)

Up to 60 dB of adjustable system gain

Rugged metal housing on both transmitters and receiver

Selectable 1, 10, and 20 mW transmitter RF output power

Transmitters offer AA alkaline backwards compatibility

**APEX
EVENTS**

Axient Digital PSM

Advanced Digital In-Ear Monitor System



Sennheiser Spectera Base Station Wireless Transmitter/Receiver

Configuration	Reciever/Transmitter	Receiver	Receiver	Receiver
Analog/Digital	Digital	Digital	Digital	Digital
Receiver Type	Rackmount, Table Top	Table Top	Rackmount	Rackmount
Simultaneous Channels	32 x 32	4	Dual channel	4
Compatibility	Sennheiser Spectra	Sound Devices A10-TX, A20-Mini	-	Shure ULX-D
Front Panel Display	Yes	Yes	Yes	Yes
Rack Spaces	1U	Half-rack	1U	1U
Power Source	Standard IEC AC Cable	1 x TA4 In, 2 x TA4 Out	-	Standard IEC AC power cable



SENNHEISER ew IEM G4-A

FEATURES

- Engineered for professional live sound: Rugged all-in-one wireless monitoring system for in-ear applications.
- Robust bodypack receiver and reliable in-ear monitoring IE 4 headphones delivering clarity along the whole frequency spectrum for daily use on stage
- Half-rack stereo transmitter in a full-metal housing with OLED display for full control
- Easy and flexible wireless synchronization between transmitter and receiver via infrared
- Compatible with Sennheiser WSM control software for flexible frequency allocation
- Up to 16 compatible channels
- Up to 42 MHz bandwidth with 1680 selectable frequencies, fully tunable in a stable UHF range
- Transmission Range: up to 100 meters / 300 feet
- High RF output power (up to 50 mW) depending on country regulations



SR 2050I EM GW MONOTOR TWIN TRANSMITTER

SR 2050 IEM-AW+

Overview Robust, reliable and flexible - in short: professional.

With the SR 2050 rack-mount twin transmitter, 26 channel banks with up to 32 channels are available.

In six of the channel banks the channels are freely programmable.

Three switchable RF output powers (10, 30, 50 mW - XP variant 100 mW) ensure maximum artistic and technical freedom.



Wireless Microphones – Shure QLX-D Series

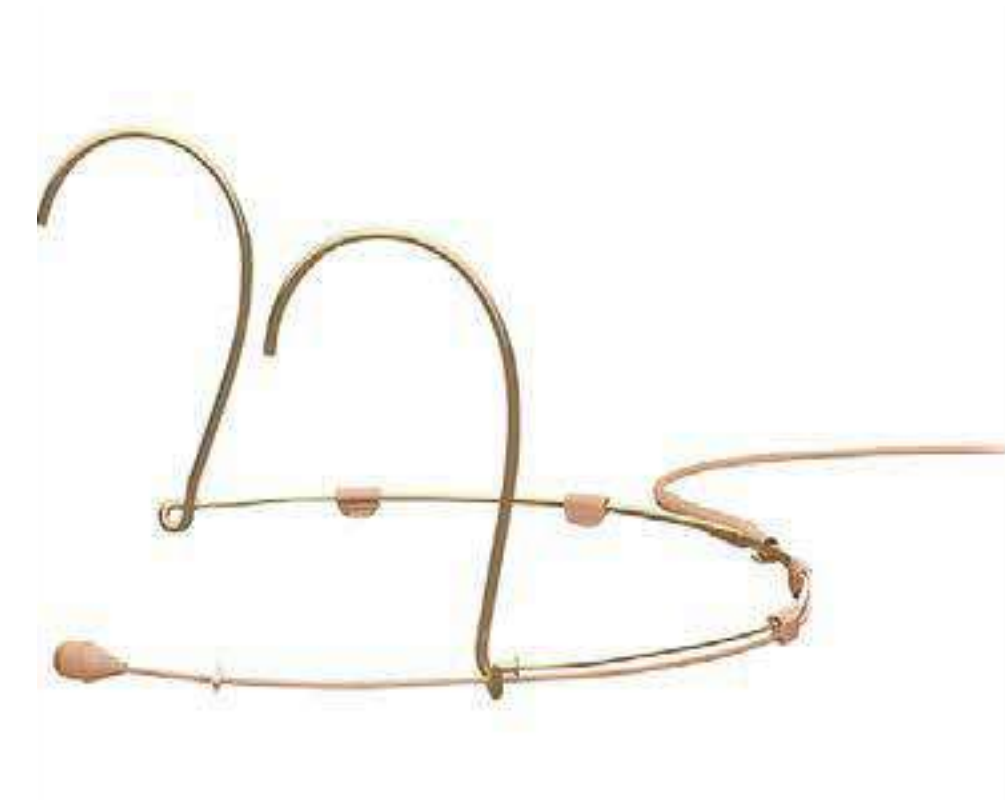
- 24 bit audio with 120 dB dynamic range
- 2.9 milliseconds system latency
- Rugged, all metal construction
- IR sync between transmitters and receivers
- AES-256 encryption for wireless transmission
- Up to 10 hour transmitter battery life with Shure lithium ion rechargeable batteries, with remaining run time displayed in hours and minutes accurate to 15 minutes
- Up to 9 hour transmitter battery life with standard AA batteries
- Transmitter RF power can set to 1 mW or 10 mW
- Up to 22 transmitters can simultaneously operate on an 8 MHz channel within the UHF range
- Frequency bands cover up to 72 MHz
- Automatic channel scan



SHURE

DPA4088 Directional Headset Mic

The classic 4088 Directional Headset Microphone is the industry standard in professional headset mics.

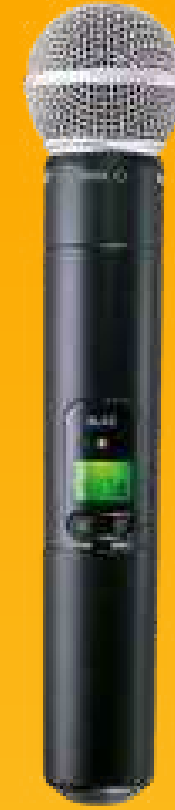




Shure PG 58/SM 58 For BLX System



Shure SM58 For SLX System



Shure SM58 For QLX-D System



Shure SM58/B58A For ULX-D System



Wireless lavalier - Shure CVL-BC-TQG



Wireless lavalier - Shure WL93



SHURE



Wireless Headset- Shure- PGA31



Wireless Headset- Shure- PGA31



Wireless Headset- Shure- PGA31



Wireless Headset- Shure- PGA31

SHURE



Shure CVG-18 Goosneck



Shure MX418 Goosneck



Shure SM57



Shure SM58



Proel DM580LC



Peavey PVM 50



Sennheiser e845

SHURE

**APEX
EVENTS**

Wired Microphones



Drum Kit- 7 Mics -BOX



Audix Fusion FP-7

SHURE

Recording Equipment



Zoom H4NPro



Zoom H6



BOYA BY-M40D

DI Boxes



Samson MD 2 PRO (STEREO)



Radial USB PRO



Klark Teknik (MONO)



(Proel DIRECT 100P Passive (MONO))



Samson MD 1 PRO (MONO)



Klark Teknik (STEREO)

TELEVIC Confidea FLEX G4 Wireless Conference Unit with Dante

The Wireless Access Point supports the following functions and capabilities:- Based on WiFi5 standard- Clean channel manager that scans for the optimal channel use- Operates in the limited access DFS channels maximizing the available spectrum.



televic

Audipack Silent Series Translation Booth



William Sound [IC-2] Interpreter Control Console

System Includes

- (1) IC-2 interpreter control console
- (1) WCA 091 25' CAT 5 cable
- (1) TFP 044 power supply

Features

- Width 333 mm
- Height 107.9 mm
- Depth 414.2 mm
- Weight 8 kg
- Frequency Range 20 - 40000 Hz
- Sampling Rate 96 kHz
- A/D Converter 24 bit
- D/A Converter 32 bit
- S/N Ratio Line, Phono & Mic 105 dB, 88 dB & 79 dB
- Distortion < 0.005 % (LINE)



Williams sound translation system multi channel fm receiver

The T2800 FM base station transmitter operates on the 863 MHz bandwidth for European use. It will broadcast a speaker's voice, music program or audio service wirelessly up to 500 feet to a listening audience. Set-up is quick and easy: Simply connect a microphone to the unit with an 3.5mm plug. Also connect the unit to a sound system or other audio service through a line-level (RCA jack). Ideal for language interpretation or hearing assistance applications. Compatible with the Williams Sound 863 FM receivers.

The R2863 FM receiver is compact, simple to use and now offers an expanded range of up to 250 feet. It has an easy-to-read LCD display, with quick status views and immediate access to 16 user-selectable, pre-set frequencies. Optimized for use in Europe, this receiver offers the exceptional audio quality you've come to expect from Williams Sound. The R2863 can be used with Alkaline AA batteries, or rechargeable NiMH AA batteries. The new technology accommodates a variety of microphone/headphone/neckloop options, and is ideal for use in assistive listening, tour guide and simultaneous interpretation scenarios



T2800 Transmitter



R2863 Receiver

CLARKE AV WIRELESS PUSH TO TALK SYSTEM



BOSCH LBB 3330 Push to talk (PTT) Microphone (wired)



SHURE SRH240A

Professional Quality Headphones



SHURE



thank you

ZONE 54, AL WAAB STREET NO: 625, BUILDING NO: 120
OFFICE NO: F05 & F06 SPORT ACCELERATOR, ASPIRE ZONE

events@apexqatar.com | www.apexqatar.com

M: +974 3383 4548, +974 77716660, T : +974 4412 0030, F : +974 4412 0330