



lights

**APEX**  
**EVENTS**

# lights inventory





# lighting console



**APEX  
EVENTS**

# GRAND MA 3 FULL SIZE



**MA**<sup>®</sup>

## Grand MA3 NPU L processing unit



- Real-time control for up to 250 000 parameters per session in connection with grandMA3 processing units
- 6 DMX outputs, 1 DMX input
- 3 internal foldable monitor multi-touch screens
- 3 internal letterbox multi-touch screens
- 2 internal multi-touch command screens
- 2 external multi-touch screens can be connected
- 2 multipurpose level wheels
- 2 multipurpose single encoder
- 71 rotary RGB backlit encoder
- 5 backlit dual encoders
- 30 backlit motorized 60 mm faders
- 120 separate playbacks
- 16 assignable x-keys
- Integrated keyboard drawer
- Built-in uninterruptible power supply (UPS)
- 3 etherCON connectors, 6 USB connectors
- 2 backlit motorized A/B faders 100 mm
- Individually backlit and dimmable silent (clickless)

### Features :

Parameters	: 80192 (HTP/LTP)
Parameters Mode2	: 40096 (HTP/LTP)
Operating voltage/ Supply voltage	: AC 100 - 240 V; 50/60 Hz
Power	: max. 200 VA
Operating Temperature	: 0 °C up to 40 °C / 32 °F up to 104 °F
Dimensions	: 482 x 372 x 87 mm / 19 x 15 x 4 in0 (width x depth x height)
Net weight	: 5 kg / 12 lbs
Connectors	: 1 x powerCON TRUE10 2 x etherCON/RJ450 8 x DMX512-A Out (5pin XLR female)0 3 x USB 2.0 (type A)

**APEX  
EVENTS**

# GRAND MA 2 FULL SIZE



MA<sup>®</sup>

- Real-time control for up to 65,536 parameters per session in connection with MA NPU (equivalent to 256 DMX universes)
- 8,192 HTP/LTP parameters
- 6 DMX outputs
- 3 internal TFT wide mode touchscreens (15.4" WXGA)
- 1 internal command screen – multi-touch (9" SVGA)
- 30 motorized executor faders
- Integrated keyboard drawer
- Built-in uninterruptible power supply (UPS)
- 2 etherCON connectors, 5 USB 2.0 connectors
- 2 motorized A/B fader 100mm
- Individually backlit and dimmable silent (clickless) keys

# GRAND MA NPU



MA<sup>®</sup>

- Real-time calculation for up to 65,536 parameters with a grandMA2 system (up to 256 DMX universes)
- 4,096 HTP/LTP parameters
- 8 DMX out (XLR 5pin)
- 1 internal command touchscreen (7")
- 1 powerCON in and out
- 1 etherCON connector
- 3 USB 2.0 connectors

APEX  
EVENTS

# AVOLITE ARENA



- 40 Playback faders
- 4 x Rotary playback encoders
- Screen-based labelling for all playback faders
- 20 Macro / Executor buttons
- Dedicated Grand Master fader
- 1 x 15.6" high-brightness touchscreen
- 1 x 7" additional touchscreen
- 3 x High-quality optical encoder wheels
- Expand control surface with optional Tiger Touch Fader Wing
- Supports one additional touchscreen
- Avokey security built-in
- Integrated UPS
- Integrated 1Gb network switch
- 1Gb OpticalCON stage link

# AVOLITES TIGER TOUCH 2



- 20 Playback faders
- 10 Macro / Executor buttons
- 15.6" high-brightness touchscreen
- Expand control surface with optional Tiger Touch Fader Wing
- 3x High-quality optical encoder wheels
- Supports one additional touchscreen
- Avokey security built-in
- Integrated UPS

# AVOLITE QUARTZ



- 10 Playback faders
- 20 Macro / Executor buttons
- 3 x high quality optical encoder wheels
- 12.1" high-brightness touchscreen
- Super-compact - just 42.5cm (16.5") wide
- Solid State internal storage
- Expand control surface with optional Mobile Fader Wing  
Supports one additional touchscreen
- Avokey security built-in

# MINI PEARL 1024



- DMX controller
- Number of universes: 2
- Channels per fixture: 40 primary + 40 fine tuning
- Supports R20 files
- Pan/Tilt switching
- Simultaneous scenes: 10
- Scene steps: 600
- Master fader: global, playback and fixture
- Real time blackout: yes
- Value of channels on the rotary handwheel: yes
- Value of channels on the fader: yes
- Dimension : 485 x 420 x 105mm
- weight: 6.0kg

# 512 Mixer



- 8 Sliders for manual channel control
- Master OFF button
- Fade time / speed adjustment
- Manual override for controlling any channel at any moment
- Built - in microphone for music triggering
- DMX polarity selector

# SUNLITE EC



- UNLITE-EC provides 4 DMX connectors and a backlit keypad to control your lights. With 1024 DMX channels and Sunlite Suite 3 EXPRESS mode out of the box, the interface can be upgraded to 2048 channels

# Showtech DMX Splitter



- RDM-capable DMX splitter for up to two universes
- Two inputs can be assigned freely to 8 optically isolated outputs
- Real-time monitoring DMX
- Adjustable DMX timing
- OLED display for recalling functions
- 2 DMX inputs: XLR 3-pin
- 8 DMX outputs: XLR 3-pin
- Power input: Power Twist
- Dimensions: 483 x 140 x 46 mm
- Weight: 3.4 kg



# moving fixtures



**APEX**  
EVENTS

# Robe MegaPointe®



MEGA bright with MEGA features and still compact. The MegaPointe from Robe. Light source Osram Sirius HRI 470 W RO Light output MEGA bright 2.200.000 lx @ 5 Zoom range 1.8°– 21° beam mode, 3°– 42° spot mode Effects CMY mixing, rotating and static gobo wheel, animation wheel, 12 beam and flower effects

**ROBE®**

**APEX  
EVENTS**

# Robe iFORTE®



Even the mighty need the right protection! With unique game-changing patented technology, you can shift the power outside, rain or shine, dust, smoke and haze, with the iFORTE®! Light source iSE-TE™ 1.000W White LED TRANSFERABLE ENGINE Light output up to 50.000 lm, 113.000 lx @5m, Cpulse™ special flicker free management for HD and UHD cameras, Zoom range 5° - 55° Effects 2 rotating gobo wheels, 2 color wheels, animation wheel, frost, iris, 6-facet circular and linear prisms, framing shutters.

ROBE®

APEX  
EVENTS

# Robe Spiider®



**ROBE®**

#### Light source:

1x 60W RGBW and 18 x 40W RGBW LED multichips

#### Light output:

13.700 lm, 50.100 lx @ 5m

#### Zoom range:

4° - 50°

#### Effects:

pixel control, MCFE™ - Multi-Coloured Flower Effects (patented), virtual colour wheel, tungsten lamp effect, preprogrammed pixel effects .

The Robe Spiider® – Our super bright LED WashBeam luminaire has truly set the benchmark in performance! Using 18 x 40 Watt and 1 x 60 Watt LEDs, combined with a highly efficient 12,5:1 zoom optical system, ranging from tight 4° Beam to wide 50° Wash, makes the Spiider® the leader in its class. Beautiful convergence of hard edge in-air effects, punchy beams and smooth, homogenized rich colour washes are all encapsulated in the unique Spiider®!

**APEX  
EVENTS**

# RoboSpot Follow Spot system



**ROBE**

## Main features

- 15.6" monitor
- QVGA Robe touch screen with battery backup
- 4 control jog-wheels
- 10 preset buttons with a direct access of the pre-programmed features
- Activation button
- Pan & Tilt freeze buttons Tel: +420-571-751500 Fax: +420-571-751515 Email: info@robe.cz
- 2 faders mounted on the handles with direct control of the key features 0-100% (for example dimmer and iris), assignable to any fixture properties (focus, zoom, frost, etc)
- Manual movement control with position indication on the screen
- User setting of controllable attributes
- Saving and uploading of custom settings
- Compatible with: Compatible with the Robe BMFL™ FollowSpot / FollowSpot LT, BMFL™ Spot, BMFL™ Blade, BMFL™ WashBeam, BMFL™ WashBeam EV, ESPRITE®, ESPRITE® FS, iESPRITE®, FORTE®, FORTE® FS, iFORTE®, iFORTE® FS, iFORTE® LTX WB, iFORTE® LTX FS, TX1 PosiProfile™, T1 Profile™, T1 Profile FS™, T2 Profile™, T2 Profile FS™, DL7S Profile™, DL4S Profile™, iSpiider®, iPointe65®, iPointe®, MegaPointe®, Pointe®, SPOTE™, CUETE®, PAINTE®, PAINTE® SPOT, iPAINTE®, ProMotion™, Viva CMY™, SilverScan™, Tarrantula™, Spiider®, LEDBeam 150™, LEDBeam 350™, iBeam 350™, MMX WashBeam™, MMX Blade™, when the RoboSpot MotionCamera is connected to the RoboSpot BaseStation
- One RoboSpot can control up to 12 fixtures Control and programming
- Display: QVGA Robe touch screen with battery backup
- Movement control: manual Thermal specification
- Maximum ambient temperature: 40°C (104°F)
- Minimum operating temperature: 0°C (32°F) Electrical specification and connections
- Power supply: Electronic auto-ranging
- Input voltage range: 100-240 V, 50/60 Hz
- Power consumption: 15 W
- Power in connector: Neutrik powerCON TRUE1
- DMX and RDM data in/out: Locking 3-pin & 5-pin XLR
- Ethernet port in/out: RJ45

**APEX  
EVENTS**

# CLAY PAKY SCENIUS PROFILE

1400W OSRAM  
DISCHARGE LAMP



# CLAY PAKY MYTHOS 2



- New optical reflector to ensure perfectly uniform beam projections
- Framing System operating on 4 focal planes
- Framing System rotation on 90 deg
- 8 deg - 50 deg zoom
- Focus tracking system
- 6500 K output color temperature
- Very high CRI
- CMY System + Linear CTO
- 7-color wheel
- 14 gobos (6 rotating + 8 fixed)
- Rotating Prism
- 16 blades fast Iris
- Variable "soft edge" frost
- Variable flood frost
- Very precise 0-100% dimmer
- Fast stop/strobe effect
- Light can be run at 1400W or 1200W
- Art-Net/RDM

- Osram Sirius HRI® 440W X discharge lamp
- Large 160mm diameter front lens
- Electronic focusing for a perfectly sharp light beam along its entire length
- 4°- 50° electronic zoom (Spotlight mode)
- 2.5° aperture and "pipe" effect (Beam mode)
- CMY color mixing with gradually fading color wheels
- 15 special color filters on three wheel
- 2 CTO filters (3200 K and 2500 K) + 1 CTB filter
- Wheel with 6 HQ dichroic rotating gobos
- Wheel with 18+1 fixed metal gobos
- 6 beam reducer filters on the gobo wheel
- Advanced visual effect disc (animation disc)
- 2 indexable rotating prisms (8-facet and linear 4-facet prism)
- Frost filter for soft-edge projection
- High precision dimmer and stop-strobe effect
- Rapid and extensive pan and tilt movements
- High performance electronics and firmware
- Art-Net / RDM
- Patented Italian Design

**APEX  
EVENTS**

# CLAY PAKY SHARPY



- 189W discharge lamp (Platinum 5R o Osram Sirius 190 Plus)
- Perfectly parallel, laser-like beam, sharply defined and free of any halo
- Unprecedented brightness – comparable to wattages many times higher (59,760 lx at 20m)
- Adjustable beam angle from 0 to 3.8°
- Interchangeable color wheel with 14 fixed colors
- Interchangeable gobo wheel with 17 fixed gobos
- 8-facet rotating prism - Mechanical dimmer - Frost Filter
- Rapid and extensive pan and tilt movements
- New, high-performance electronics
- Patented Italian design
- Small, lightweight and easily transported (only 48 cm x 19 Kg)
- Eco-friendly: replaces far larger and more expensive spotlights
- Art-Net / RDM
- Electronic ballast fitted as standard

# CLAY PAKY B-Eye K20



- **Light Source:**  
37 x 15W RGBW LEDs
- **Zoom range:**  
4°-60° Electronic Zoom Range
- **Effects:**  
Three operating modes: wash, beam, FX (Kaleido effects);  
Rotating Front Lens; 0-100% linear electronic dimmer;  
Adjustable speed stop/strobe effect; dedicated CTC

# CYCLOPS SPARKLY 37



**CYCLOPS**  
LIGHTING

# VELLO XP 800 WASH



**VELLO**<sup>®</sup>  
PROFESSIONAL LIGHTING

- Light source: 37 x 15 watts RGBW LED
- LED life expectancy: 50,000 Hrs.
- Beam angle: 7° to 40°
- Light output: 11,000 Lux @ 10m @ 7°
- Color mixing: RGBW
- Electronic variable strobe
- Built-in color and dynamic macros
- Four zones control
- Control protocols: DMX

- Available with built-in W-DMX™ by Wireless Solution Sweden
- Display: Touch screen display
- Control channels: 14, 25, 30 CHs
- Pan: 540o
- Tilt: 270o
- Power consumption: 800 watts
- Dimensions: 413 x 320 x 487mm
- Net weight: 17 Kg

- Power consumption: 600W
- Light source: OSRAM 4in1 RGBW 15WX37pcs
- Lifetime: >100,000hours
- CTO: 2700K-8000K
- Electronic zoom range: 6° -50°
- Pan movement range: 540°
- Tilt movement range: 310°
- Display: LCD display
- DMX Channel: 16/28 DMX
- Pixel Control: Dot matrix in 3 circles
- Control mode: Master /Slave synchronization, Stand-alone mode and DMX512 control
- Dimension: 413\*210\*545mm □ Net Weight: 16.8kgs
- Gross Weight: 19.5kgs

**APEX**  
EVENTS

# EURO LITE VISION Sword 380



## Power:

Power supply: 100~240V, 50/60H

Power rated: 550W (90V)

Lamp: OSRAM SIRIUS HRI ® 371W S (Lamp rated life: 1500H)

Color temperature: 8000K

- Efficient optical system, Powerful light output, High quality optical lens.
- 1 color wheel: 13 color + white, half-color effect, rainbow effect with bidirectional rotation.
- 1 fixed pattern plate: 14 pattern pieces + white, with pattern dithering and pattern arbitrary positioning function.
- Magnetic positioning function, convenient for initial position correction and maintenance
- Prism1: 8 prism that can be rotated and overlapped in two-way
- Prism2: 24 honeycomb prism that can be rotated and overlapped in two-way
- Focusing angle: Zoom: 1.8° (Fixed focus )
- Fog: Independent fog and soft light effect
- Dimming/strobe: 0%~100% smooth dimming, multiple speed strobe effect

# VELLO BSW 400 HYBRID BEAM



**VELLO**<sup>®</sup>  
PROFESSIONAL LIGHTING

- Power consumption: 550W
- Lamp: Osram 371W white discharge bulb
- Lamp color temperature: 7650K
- Average lifetime: 1500hours
- Ballast: Electronic ballast
- Lens: high precision optical lens system
- Color wheel: 11 colors+ white
- Three gobo wheels

- Dual Prism wheel
- DMX channel: 20/25 Chs
- Pan movement range: 540°Tilt movement range: 270°
- Automatic Pan/Tilt position correction
- Dimmer: 0-100% linear dimming system
- DMX in/out socket : 3pin+5pin DMX XLR
- Dimension: 438X260X693mm □ Net Weight: 25.9kgs

# OMARTE SEER BEAM



**omarte** 欧玛

- Using OSRAM 440w platinum light source.
- ultra-high brightness output, strong penetrating power.
- The external system quick upgrade interface can upgrade the lighting system in batches at one time.
- Comes with a unique patented integrated system of concealed folding light hooks.
- There is a color wheel with 14 colors to choose from.
- 1 fixed gobo wheel with 16 kinds of patterns,
- 1 rotating gobo wheel with 8 kinds of detachable patterns
- It can be rotated in two directions with variable speed.
- 1 octagonal prism and 1 sixteen prism.
- The double prisms are switched between each other.
- with rotating patterns and rich colors, giving people a strong visual impact.
- The uniquely designed cooling system makes the lamp stronger and more stable.

**APEX**  
EVENTS



# LED fixtures



**APEX**  
EVENTS

# LED COLOR PANEL BTS 3300



Light source: 5 color LED chip lamp beads (RGB+ White+ Amber, Color temperature: 2700K-9000K color temperature linear adjustable.

Average lifespan: 50000 hours.

Color rendering index: CRI $\geq$ 95.

Luminous flux: 19500lm.

Beam angle: 110°.

Control protocol: Standard DMX512 protocol

Rated power: 300W power factor PF $\geq$ 0.98

Control protocol: Standard DMX512 protocol

**HONDYS**

**APEX  
EVENTS**

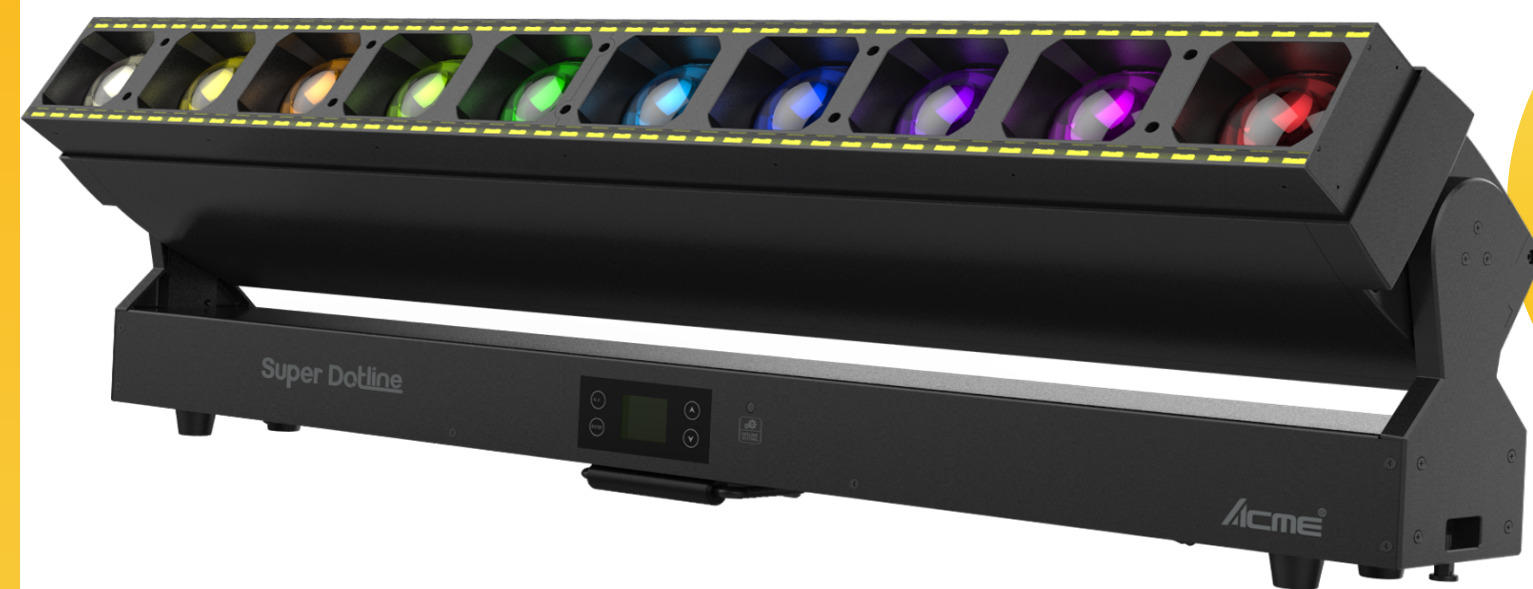
# HONDYS WIRELESS LED TUBE 1M



**HONDYS**

Parameters	Unit	Description
<b>Optical parameters</b>		
Color rendering index	CRI	≥95
LED life	H	50000
Color temperature	K	3200-8500
Color	—	RGBW
Beam angle	DEG	160
LED quantity	PCS	96
Pixel quantity	PCS	24
Gray level	—	65536
Color refresh frequency	—	16K
<b>Electronic parameters</b>		
Charging voltage	V	5V-20V (PD Protocol)
Maximum power	W	35
Operating mode	—	DMX、ART-NET(RDM)
Battery Life	H	20000
Battery life	H	Full power>4 Power saving mode>6.5
Charging time	H	≤5
Transmission distance	M	> 60 (ART-NET mode) > 100 (Command mode) (Laboratory environment)
Operating language	—	Simplified Chinese/English
<b>Structural parameters</b>		
Size	MM	1000*φ40
Weight	KG	1.1
Waterproof rating	—	IP65
Shell material	—	PC+Aluminum
Installation method	—	Hanging ring, tripod stand, light buckle, straight connector tripod head
Package size of one set	CM	118×24×41
Package weight of one set	KG	27.2
<b>Control way</b>		
Display	—	OLED display
Manual control	—	Knob button control
Support software	—	Hondys/Mad-show/Madrix

# The ACME SUPER DOTLINE



a powerful bar light that offers several operational modes for creating unique effects and looks. Whether your needs are for beams, washes, or strobes, the SUPER DOTLINE does all in this versatile fixture, perfect for any production.

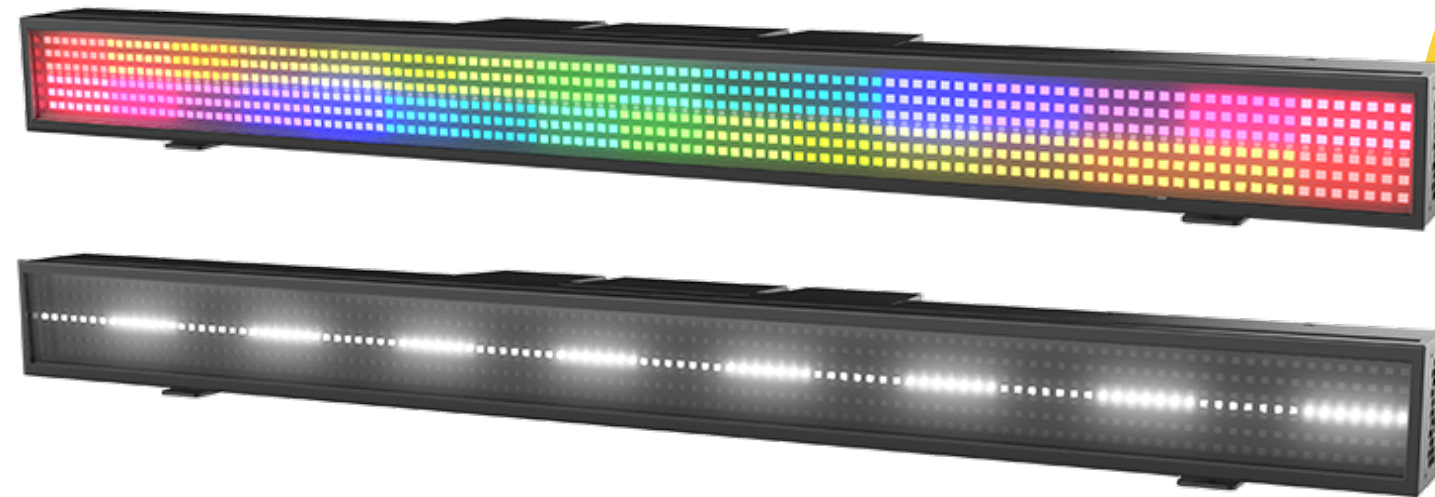
The SUPER DOTLINE fixture's main section has ten RGBW 60W LEDs and the strip light portion of the fixtures has 96 3W cool white LEDs, 96 3W warm white LEDs, and 96 0.5W RGB LEDs and is capable of an output of 23,000 lumens. The strip light section has control over 12 individual zones on one side to create the looks you want.

The fixture offers eight DMX control modes allowing you to decide how you wish to control the unit. The SUPER DOTLINE also offers preprogrammed effects macros and colors for time-saving programming and features a motorized zoom with beam angle of 2.8° to 31° ( main section) and field angle of 5° to 46° (strip section) and produces uniform beams and washes. The fixture's motorized tilt range is a wide 202° .

The SUPER DOTLINE allows for mounting in any orientation from the floor to hanging in truss. The unit has two connection points for the supplied omega brackets that accept most hooks or clamps. The fixture also features a tool-less connection system that allows units side- by-side connection and four retractable feet for floor applications. The SUPER DOTLINE only weighs 24 kilograms or just under 51 pounds and measures 1 meter (39.4 inches) in length.

The SUPER DOTLINE redefines what a bar light can be and should be

# The ACME PIXEL LINE IP



Strip light is like no other. Its small size and weight, IP66 rating for indoor and outdoor use, and uniform colors and effects make this fixture extremely versatile for any application.

The PIXEL LINE IP is powered with 672 RGB LEDs and 112 cool white LEDs with the RGBW LEDs divided into 32 sections and the white LEDs into 16 sections. The unit is equipped with ACME's patented Smart Glass Technology for unprecedented, frosted looks. The white LEDs deliver bright strobe effects and are integrated in such a way to complement the color LED sections.

The fixture offers ten DMX control modes from simple operation to intense, eye-catching individual pixel control effects. The PIXEL LINE IP also offers preprogrammed effects macros and colors for time-saving programming. Incorporating ACME's Smart Glass Technology allows the unit to switch from its normal strip light mode to soft light mode without adding an external frost filter, making the unit more flexible during your production.

The PIXEL LINE IP can be mounted in any orientation from the floor to hanging in truss and features a tool-less connection system for quick side-by-side joining. The PIXEL LINE IP is a powerful, all-weather fixture that redefines what a strip light can be.

# CYCLOPS Outdoor Rgb Led Pixel Bar



**CYCLOPS**  
LIGHTING

# VELLO P4 (4IN1)



**VELLO**<sup>®</sup>  
PROFESSIONAL LIGHTING

## Source:

Light source: SMD3535 RGB LEDs  
LED quantity: 48 LEDs

## Optical System:

Cover: Clear diffuser  
View angle: 120°

## Control & Programming:

Pixels control: 16  
Color mixing: RGB  
Control protocols: DMX, 44 FPS  
Control channels: 48 CHs  
Address setting: Manual

## Electrical:

Input voltage: 24V  
Power consumption: 10 watts

## Connections:

Power and data connection: 15cm 5 pin female  
and male connection Cable entry: Bottom

## Physical

Dimensions: 1000 x 28 x 26mm (without bracket)  
1000 x 35 x 66mm (with bracket)  
Color: Silver  
IP rating: 67  
Operating temperature: -40°C/50°C

- Power consumption: 600W
- Light source: TW prolite 4in1 RGBW 10W\*44pcs
- Lifetime: >100,000hours
- CCT: 6500K
- Lens: 20/30/40 deg optional
- Display: LCD display
- DMX channel: 4/6/9 CHs
- Protection rate: IP65, indoor and outdoor use
- Dimension: 493\*152\*352mm
- Gross weight: 16.5kgs

**APEX**  
EVENTS

# VELLO CITY COLOR



**VELLO**<sup>®</sup>  
PROFESSIONAL LIGHTING

- Power consumption: 1200W
- Light source: TX 9090 4in1 RGBW 10W\*120pcs
- Lifetime: >100,000hours
- CCT: 6500K
- DMX channel: 4/7/11 CHs
- Control mode: Master /Slave synchronization, Stand-alone mode, sound mode and DMX512 control mode
- Protection rate: IP65, indoor and outdoor use
- Dimension: 650/\*580\*670mm
- Gross weight: 53.5kgs

# VELLO LED PAR CAN



**VELLO**<sup>®</sup>  
PROFESSIONAL LIGHTING

- Power consumption: 300W
- Light source: TX 9090 4in1 RGBW 15W\*18pcs
- Lifetime: >100,000hours
- CCT: 6500K
- Lens: 17/38 deg optional
- RGBW mixing color
- Display: LED digital display
- DMX channel: 4/5/8 CHs
- Control mode: Master /Slave synchronization, Stand-alone mode, sound mode and DMX512 control mode
- Protection rate: IP65, indoor and outdoor use
- Dimension: 330\*245\*268mm
- Gross weight: 8.5kgs

**APEX  
EVENTS**

# OMARTE FLAT LED PAR



omarte 欧玛

- Power consumption: 300W
- Light source: TX 9090 4in1 RGBW 15W\*18pcs
- Lifetime: >100,000hours
- CCT: 6500K
- Lens: 17/38 deg optional
- RGBW mixing color
- Display: LED digital display
- DMX channel: 4/5/8 CHs
- Control mode: Master /Slave synchronization, Stand-alone mode, sound mode and DMX512 control mode
- Protection rate: IP65, indoor and outdoor use
- Dimension: 330\*245\*268mm
- Gross weight: 6.55kgs

# BATTERY LED PAR



- 6x 12 Watt RGBWA + UV, six in one LEDs
- Dimensions w/d/h: 138 x 144 x 205 mm
- Weight: 3,7 kg

APEX  
EVENTS

# GLP JDC1



**D/1**

- Dual Mode – High power white tube LEDs surrounded by RGB plates
- 185 deg Tilt range
- 16 bit resolution motorized tilt
- Position feedback
- High precision 3 Phase stepping motor control
- Separate control of intensity, rate and duration for tube and plate elements
- 6 pixels per plate section (12 total) can be individually controlled with color and intensity
- Center tube can be programmed in 12 pixel sections
- Macro channel with Pulse and Random effects
- DMX-512 protocol
- Pixel mapping control
- Back-lit graphic-LCD menu

**APEX  
EVENTS**

# MARTIN ATOMIC STROBE -1000



<b>Voltage:</b>	AC90-240V 50/60Hz
<b>Power Consumption:</b>	1000W
<b>Light source:</b>	960 RGB 3in1 5050SMD LED
<b>Strobe:</b>	20t/s
<b>Four operation mode:</b>	Sound control, Auto run, DMX512 and Master-slave mode
<b>Function:</b>	Dot matrix effect, dynamic music
<b>Packing size</b>	54*32*20.5cm
<b>Application:</b>	Suitable to building, party, disco, stage, wedding and other events

# VELLO LED BAR



- Power consumption: 200W
- Light source: TX 9090 4in1 RGBW 10W\*18pcs
- Lifetime: >100,000hours
- CCT: 6500K
- Dimmer: 0-100 linear dimmer system
- Even mixing color , perfect wash wall
- Slim body, low noise
- Display: LED digital display
- DMX channel: 4/5/8CHs
- Control mode: Master /Slave synchronization, Stand-alone mode, sound mode and DMX512 control mode □DMX link: 3pin+5pin DMX in and out
- Protection rate: IP20, for indoor use
- Dimension: 1075\*85\*195mm
- Net Weight: 7.5 kgs

# ARRI 2K FRESNEL



**ARRI**

# Strand Lighting LD90



## Features :

- **Cross-Cooling System:** new, highly effective cooling streams in addition to conventional cooling
- **Sliding Stirrup:** centre of gravity adjustment
- **Tilt Lock:** stainless steel friction disc for rigid lock-off
- **Top Latches:** application-oriented Top Latches for location or studio use
- **Adjustable Accessory Brackets:** adjustable 2-scrim and 4-scrim position
- **Stainless Steel Lens Protection:** maximised light transmission and high temperature stability
- **Extremely Robust Barndoors:** made of special alloy with high strength-to-weight ratio and effective tightening function
- **Maintenance:** more shared parts, very fast access to all interior workings with three torx drivers only
- **Protection Rating IP23:** safe indoor and outdoor use
- **Safety Certification:** CE, CB, GS, cNRTLus

**APEX  
EVENTS**

# DESISTI LEONARDO 2K



Desisti

- Compact, highly efficient Fresnel lens spotlight using tungsten-quartz-halogen filament lamps
- having G38 socket, L.C.L. of 127 mm. and max. 2,5 kW power (lamp 2,5 kW only available at 230V,
- the maximum power for 120V is 2 kW)

The following special versions are available on special request:

- Version using tungsten-quartz-halogen filament lamps having GY 16 socket, L.C.L. of 70 mm. and max. 2 kW power– Version using tungsten – quartz halogen twin filament lamp having GX38q Base and L.C.L. of 143 mm. Max 3750 W power (1250+2500 ) – 230 or 240V only
- 250 mm. diameter high quality, shock resistant Borosilicate glass Fresnel lens on spring supports
- Rugged and Lightweight Carbon Steel housing with low glare black epoxy powder coating, with internal double walls and reinforces.and with an high efficiency convection cooling
- Heavy-duty G-38 bi-post socket for tungsten halogen lamps, with lever activation and special contacts for homogeneous current distribution over lamp's pins

# LSC GEN VI DIMMING CONTROL



- 3.2" colour LCD touchscreen
- programmable stand-alone mode via easy-to-use menus
- DMX512 (1990) or DMX512-A (E1-11) input with RDM (E1-20) functionality on 5-pin XLR connectors
- 12 channel x 16A RCBO breakers with 30mA trip per channel
- 483mm (w) x 300mm (d) x 132mm (h) – 3RU 19" rackmount
- weight: 19kg

# VELLO LED FRESNEL



**VELLO**<sup>®</sup>  
PROFESSIONAL LIGHTING

- Power consumption: 350W
- Light source: Japanese citizen 300W white LED x 1piece
- Lifetime: 50,000hours
- CCT: 3200K /5600K optional
- High CRI > 96
- Display: LCD display
- DMX channel : 3 CHs
- Electronic zoom : 15 ° -50°
- Control mode: Master Slave synchronization, Stand-alone mode and DMX512 mode
- Protection rate: IP20, for indoor use
- 0-100% smooth dimmer system
- Manual zoom and DMX zoom both
- 3200K / 5600K color temperatures optional
- Dimension: 282X540X328mm
- Net Weight: 12kgs

# VELLO COB LED PAR



**VELLO**<sup>®</sup>  
PROFESSIONAL LIGHTING

- Input Voltage: AC90-240V 50-60Hz
- Power Consumption: 200W
- Color: Warm white / Cool white;
- Control Mode: DMX-512, Master/Slave, Sound, Auto
- DMX Channels: 2CH/4CH

**APEX**  
EVENTS

# VELLO LED PROFILE



**VELLO**<sup>®</sup>  
PROFESSIONAL LIGHTING

- Power consumption: 300W
- Light source: Japanese Citizen 200W LED white lamp
- CCT: 3200K /5600K optional
- Lifetime: >100,000hours
- High CRI > 97
- Manual zoom: 15° -55°
- DMX channel: 2 CHs
- Control mode: Master /Slave synchronization, Stand-alone mode and DMX512 control mode
- DMX link: 3pin DMX XLR
- Protection rate: IP20, for indoor use
- Dimension: 758x343x305mm
- weight: 17.5kgs

# VELLO LED 4 WAY BLINDER



**VELLO**<sup>®</sup>  
PROFESSIONAL LIGHTING

- Power consumption: 500W
- Light source: TW Jenbo 100W LED x 4 pcs
- Lifetime: 50,000hours
- CCT : 3200K-3500K
- Display: LED digital display
- DMX channel : 4/8 CHs
- Control mode: Master Slave synchronization, Stand-alone mode , sound mode and DMX512 mode
- DMX link: 3pin DMX XLR
- Protection rate: IP20 and IP44 optional
- Flicker-free
- 0-100% smooth dimmer system
- Dimension: 408\*180\*400mm
- Net Weight: 12kgs

**APEX**  
EVENTS

# VELLO LED 2 WAY BLINDER




**VELLO**<sup>®</sup>  
PROFESSIONAL LIGHTING

- Power consumption: 250W
- Light source: TW Jenbo 100W LED x 2 pcs
- Lifetime: 50,000hours
- CCT : 3200K-3500K
- Display: LED digital display
- DMX channel : 2/6 CHs
- Control mode: Master Slave synchronization, Stand-alone mode , sound mode and DMX512 mode
- DMX link: 3pin DMX XLR
- Protection rate: IP20 and IP44 optional
- Flicker-free
- 0-100% smooth dimmer system
- Dimension: 200\*180\*400mm
- Net Weight: 8kgs

# ROBERT JULIAT IVANHOE HMI 2.5K



  
ROBERT JULIAT

- Optical high performance double condenser.
- Cassette rotary iris fully closed with protection.
- Manual Shutter ( Dimmer ) from 0 to 100%.
- Support rotatable gobo , size "A" ( Ø100 ).
- 6 color changer type boomerang is interchangeable filters.
- Frosted glass tilt ( blur ).
- Slides Interior dichroic filter 120 x 120mm.
- Operating handles isolated.
- Compact volume , scratch captive.
- Adjustable Lyre strengthened.
- 230 Volt auxiliary output for feeding a color changer with tape protection.
- Lamp: MSR 2500w G38
- Current: 24A (Strike) 11.2A (settled)
- Plug: 32a 1ph
- Beam: 9-21 Degrees

**APEX**  
EVENTS

# VELLO LED FOLLOW SPOT

**VELLO**<sup>®</sup>  
PROFESSIONAL LIGHTING



<b>Voltage:</b>	AC100V - 240V 50Hz/60Hz
<b>Power :</b>	330w
<b>Lamps watts:</b>	300W LED Lamps
<b>Color</b>	6 color wheel + white pattern
<b>Controller</b>	Self Controlled by hands
<b>Control mode</b>	Stand Alone
<b>Cooling System</b>	High Quality Fans+ Aluminium
	Logo can be order

# WIRELESS LED PAR



- 18 LEDs : Red\*6, Green\*6, Blue\*6
- Professional 7 channels DMX-512 Control
- Multiple Auto Modes Support : Single color/ Color Changing Modes, Sound Activated Mode, Flash Mode etc

**APEX**  
EVENTS

# OMARTE Sky Tracker - 4000 W

- 1KW -7KW Xenon light source optional
- Color temperature 5600k
- Available in 110, 220 and 240 volt magnetic ballasts
- Auto - Strike ignition
- Reversible Rotation
- The systems are assembled with aluminium external hardware



# Portman NL Retro 680



Color Temperature(CCT)  
6000K (Daylight Alert)

Type

Spotlights

IP Rating

IP65

Control Method

DMX512

Lighting solutions service

Lighting and circuitry design, DIALux evo layout, LitePro DLX layout, Agi32 layout, auto CAD layout, Onsite metering, Project

Installation

Input Voltage(V)

AC90~240V

Product Weight (kg)

10 KG

Place of Origin

Guangdong, China

Emitting Color

color change

Material

Stainless Steel

Light Source

LED

Lamp Luminous Efficiency(lm/w)

170

Color Rendering Index

**APEX**  
EVENTS

The logo for Apex Events is centered on the left side of the image. It consists of a white circle with a thick yellow border. Inside the white circle, the words "APEX" and "EVENTS" are stacked vertically in a bold, black, sans-serif font. A small orange square is positioned above the letter 'E' in "APEX".

**APEX  
EVENTS**

**thank  
you**

Zone 54, Al Waab Street NO: 625, Building NO: 120  
Office NO: F05 & F06 Sport Accelerator, Aspire Zone

M: +974 3383 4548, +974 77716660, T : +974 4412 0030, F : +974 4412 0330

events@apexqatar.com | www.apexqatar.com

The logo for Apex Events is centered on the left side of the image. It consists of a white circle with a thick yellow border. Inside the white circle, the words "APEX" and "EVENTS" are stacked vertically in a bold, black, sans-serif font. A small orange square is positioned above the letter 'E' in "APEX".

**APEX  
EVENTS**

**thank  
you**

Zone 54, Al Waab Street NO: 625, Building NO: 120  
Office NO: F05 & F06 Sport Accelerator, Aspire Zone

M: +974 3383 4548, +974 77716660, T : +974 4412 0030, F : +974 4412 0330

events@apexqatar.com | www.apexqatar.com